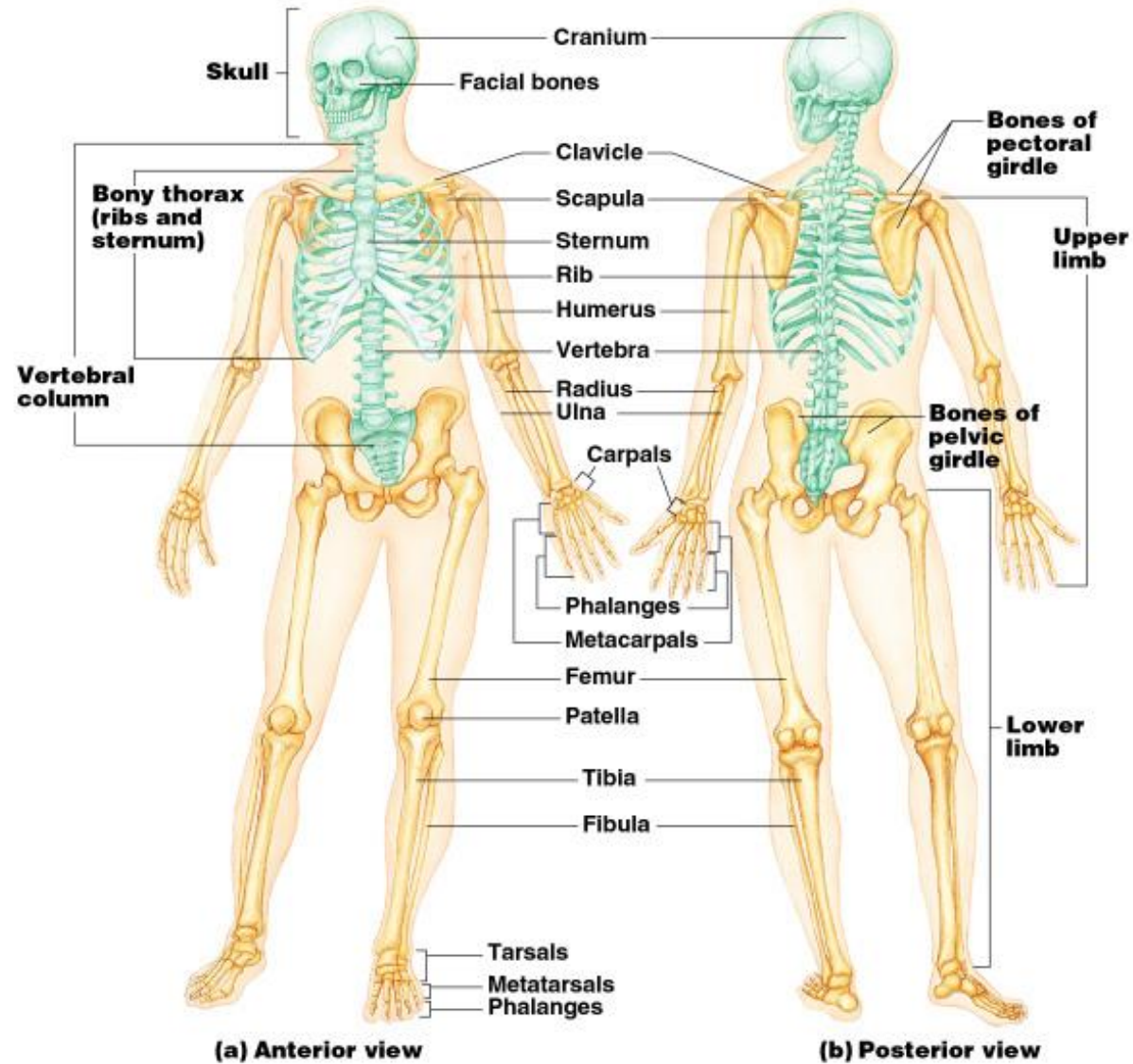


UNIT 7 – THE AXIAL SKELETON

The Axial Skeleton

- Forms the longitudinal portion of the body
- Divided into 3 parts:
 1. Skull
 2. Vertebral Column
 3. Bony Thorax

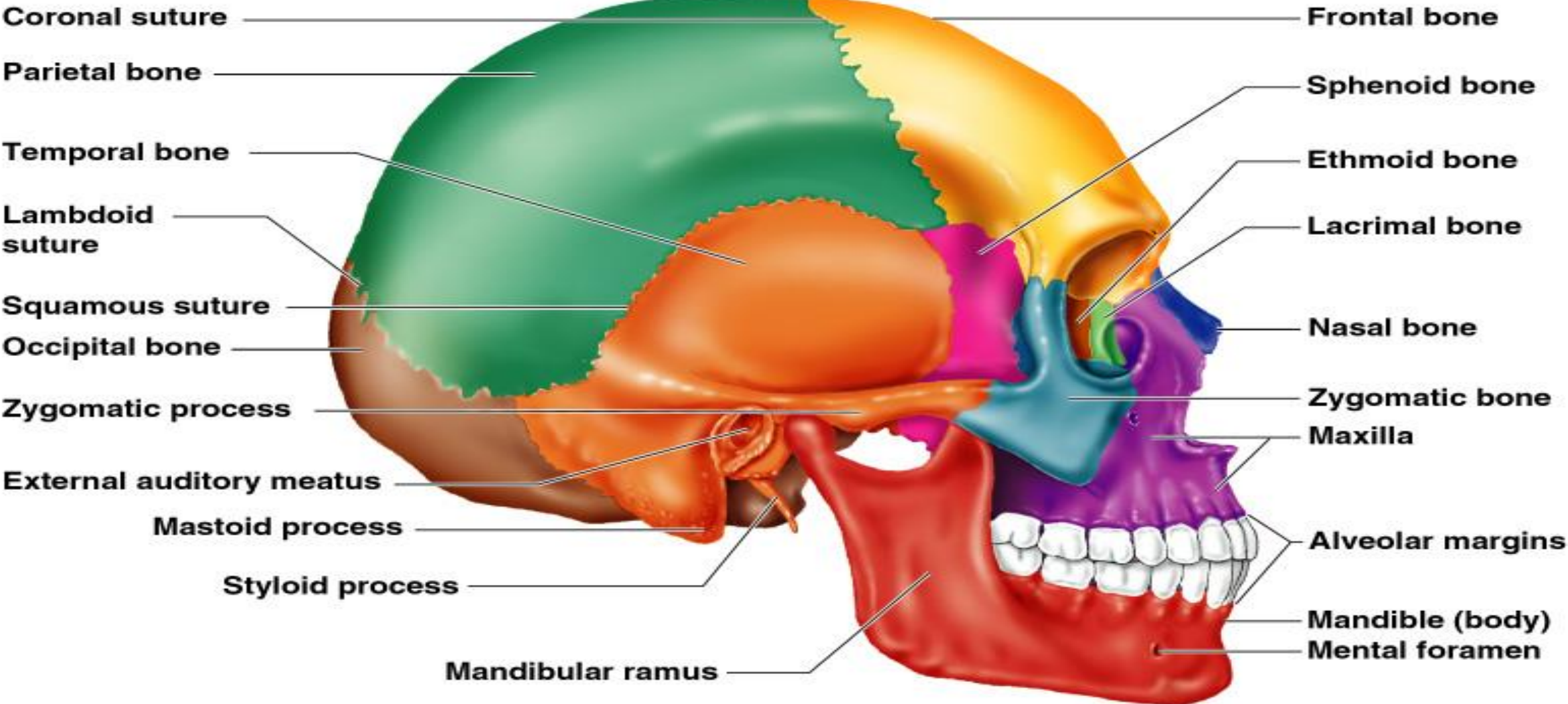
The Axial Skeleton



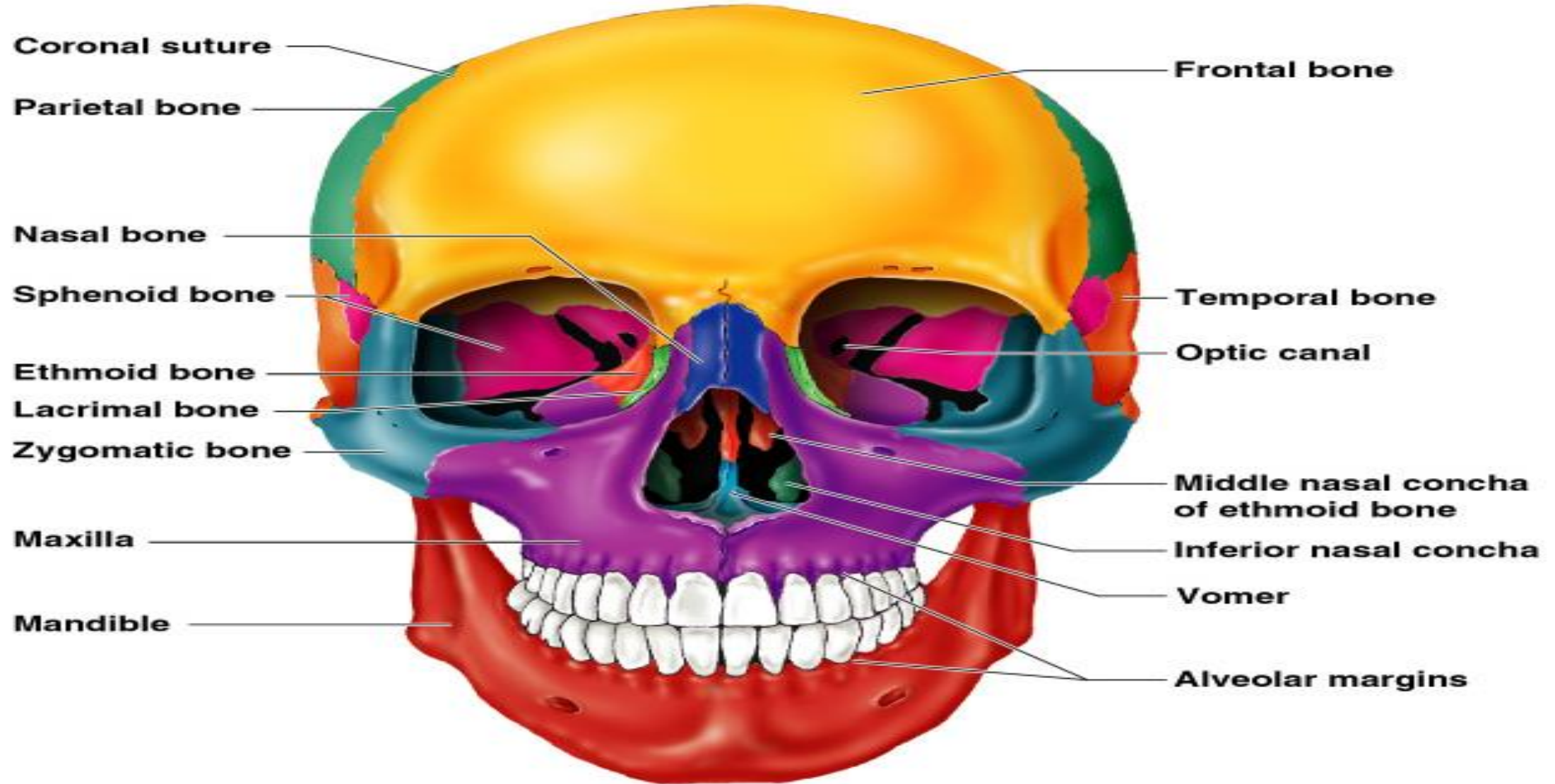
The Skull

- 2 sets of bones
 1. Cranium
 2. Facial bones
- Bones are joined by sutures
- Only the mandible is attached by a freely movable joint

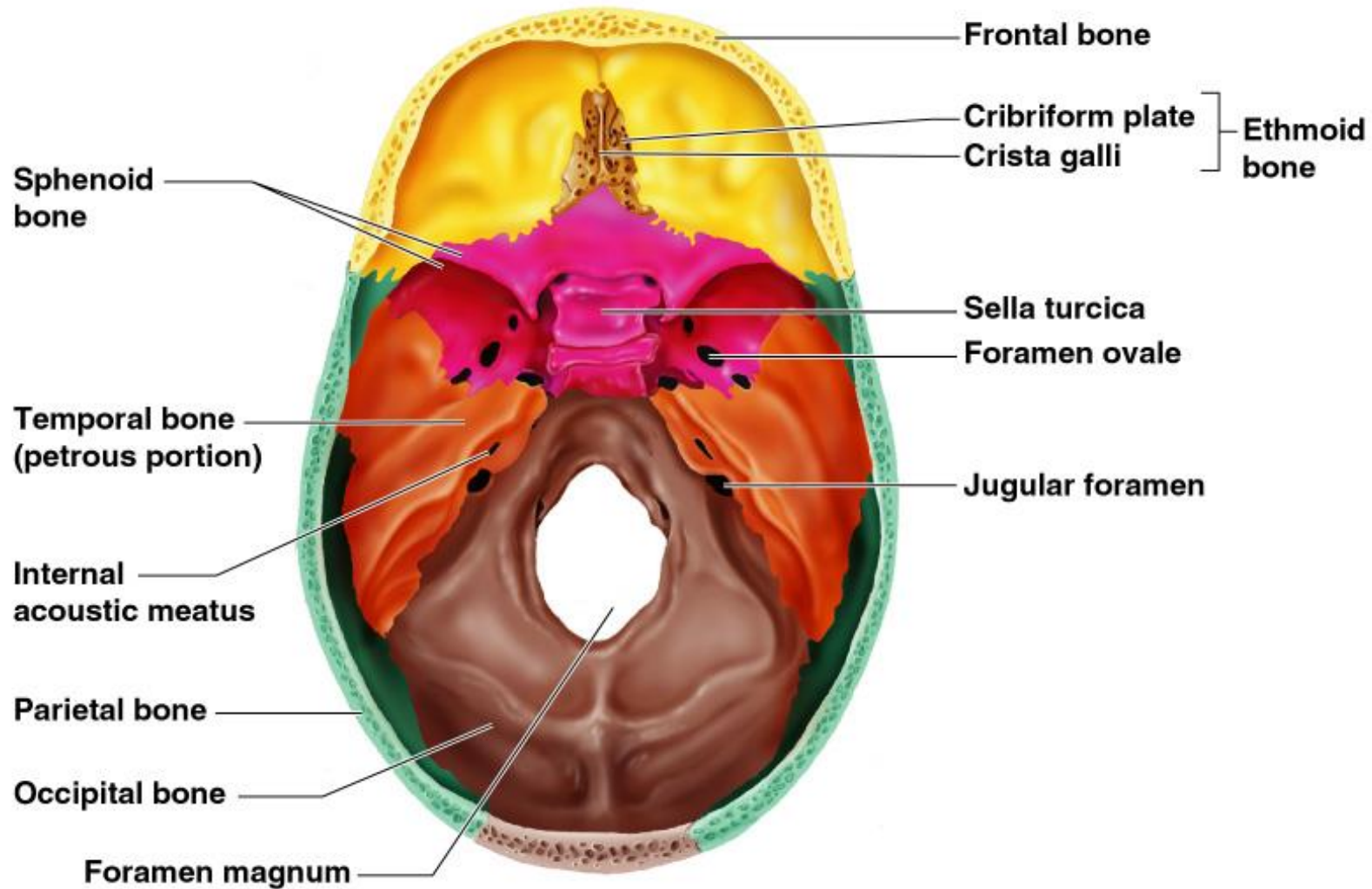
Bones of the Skull



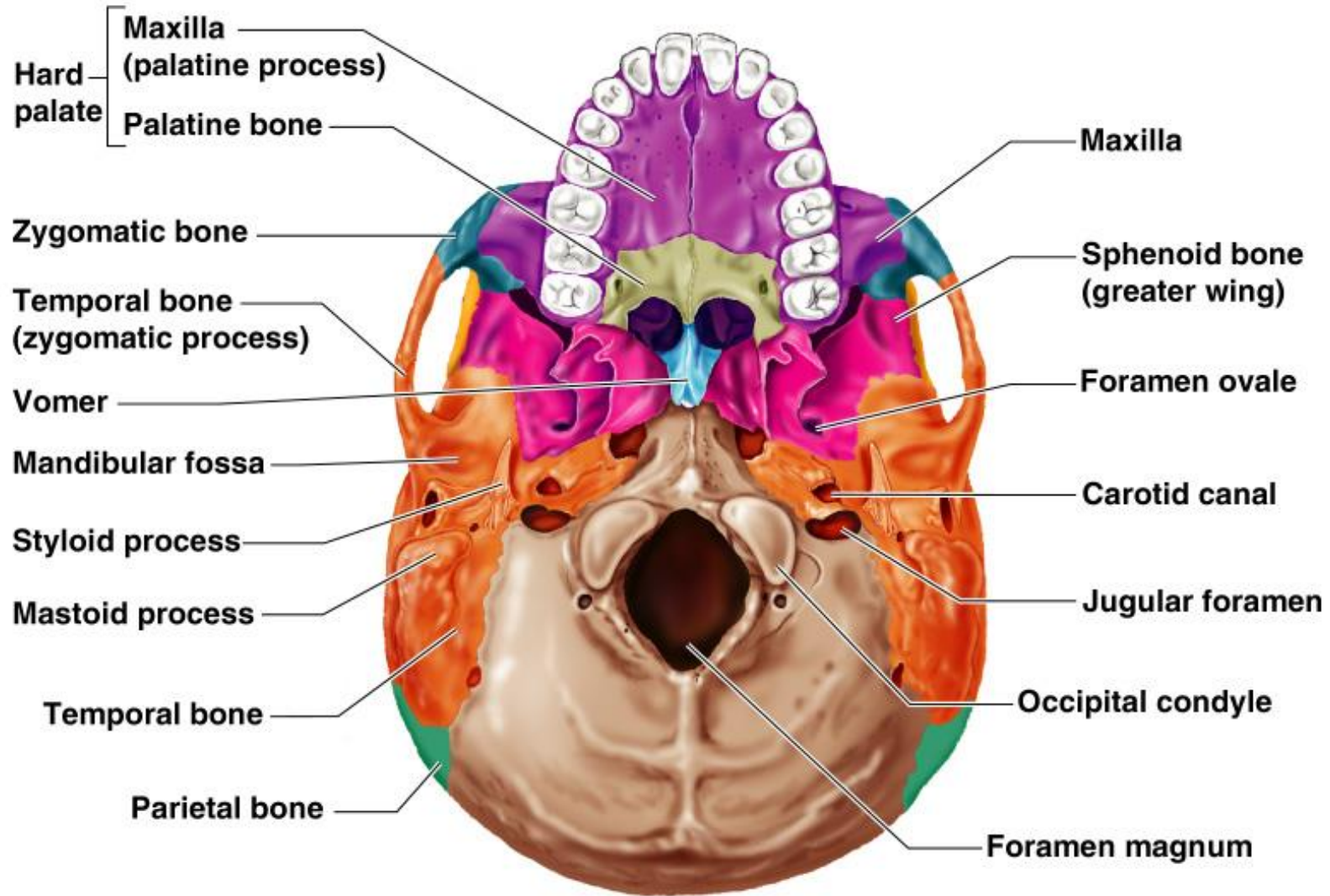
Bones of the Skull

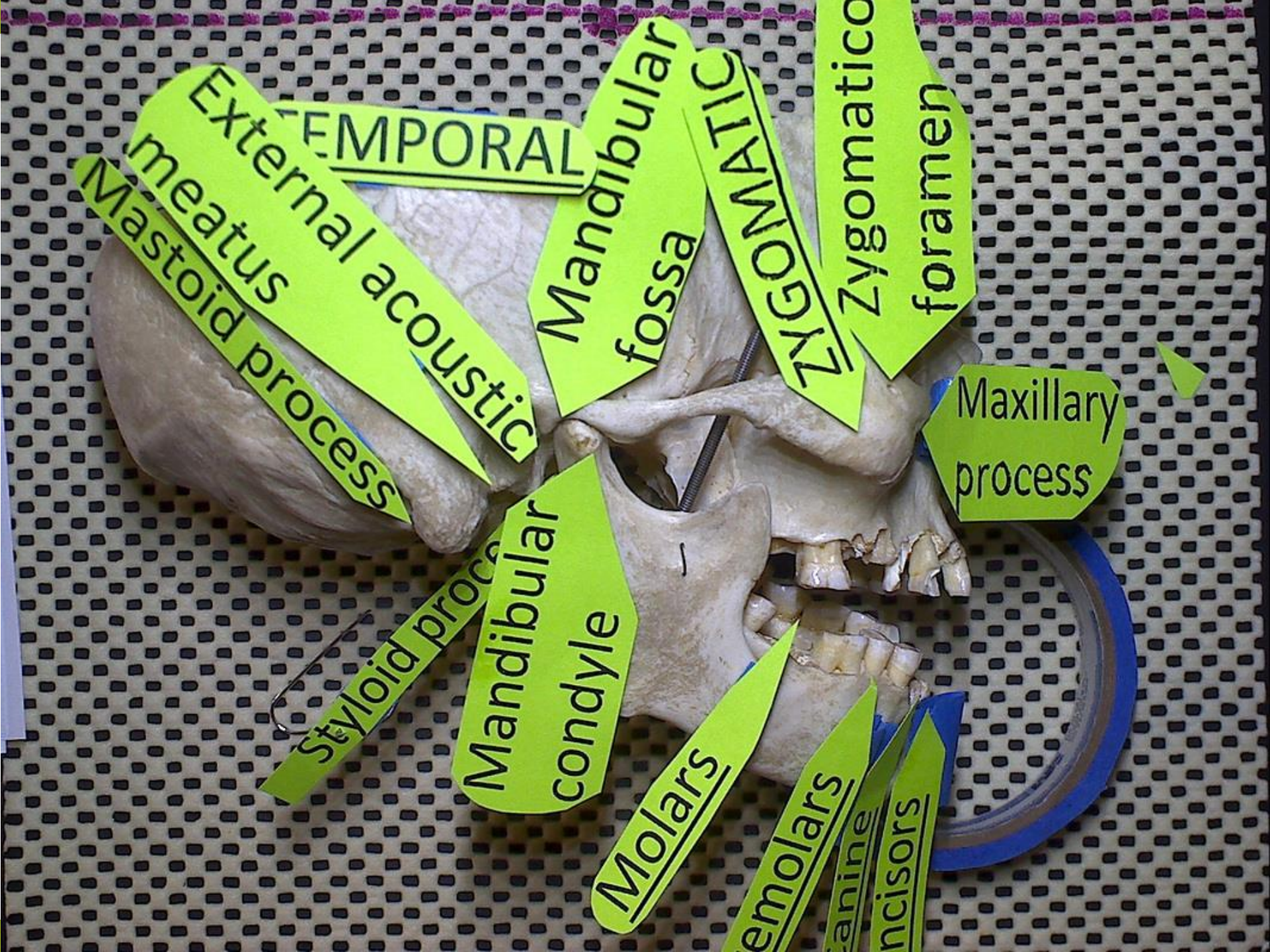


Human Skull, Superior View



Human Skull, Inferior View





External acoustic meatus
Mastoid process

TEMPORAL

Mandibular fossa

ZYGOMATIC

Zygomatico foramen

Maxillary process

Mandibular condyle

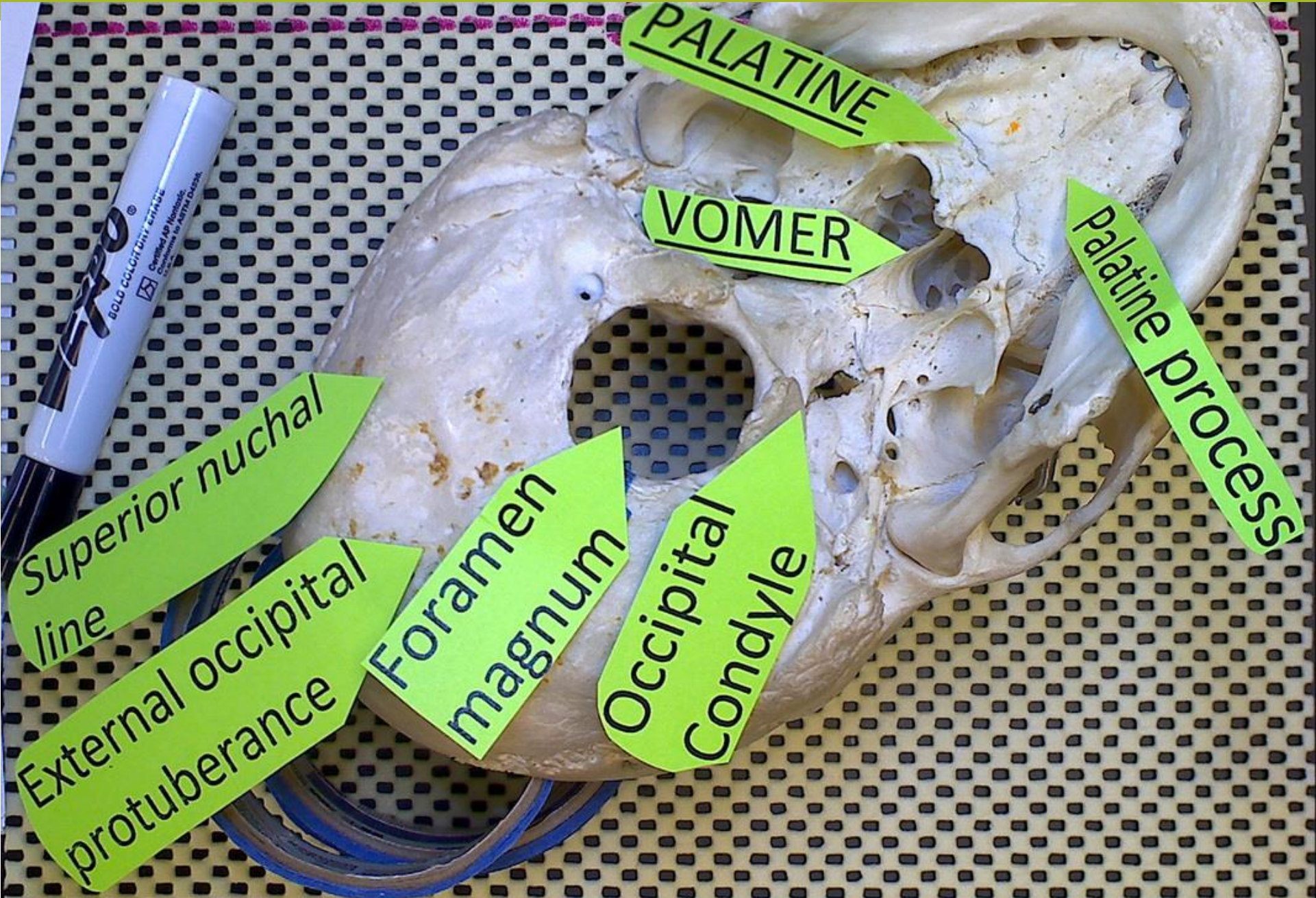
Styloid process

Molars

Premolars

Canine

Incisors



Superior nuchal line

External occipital protuberance

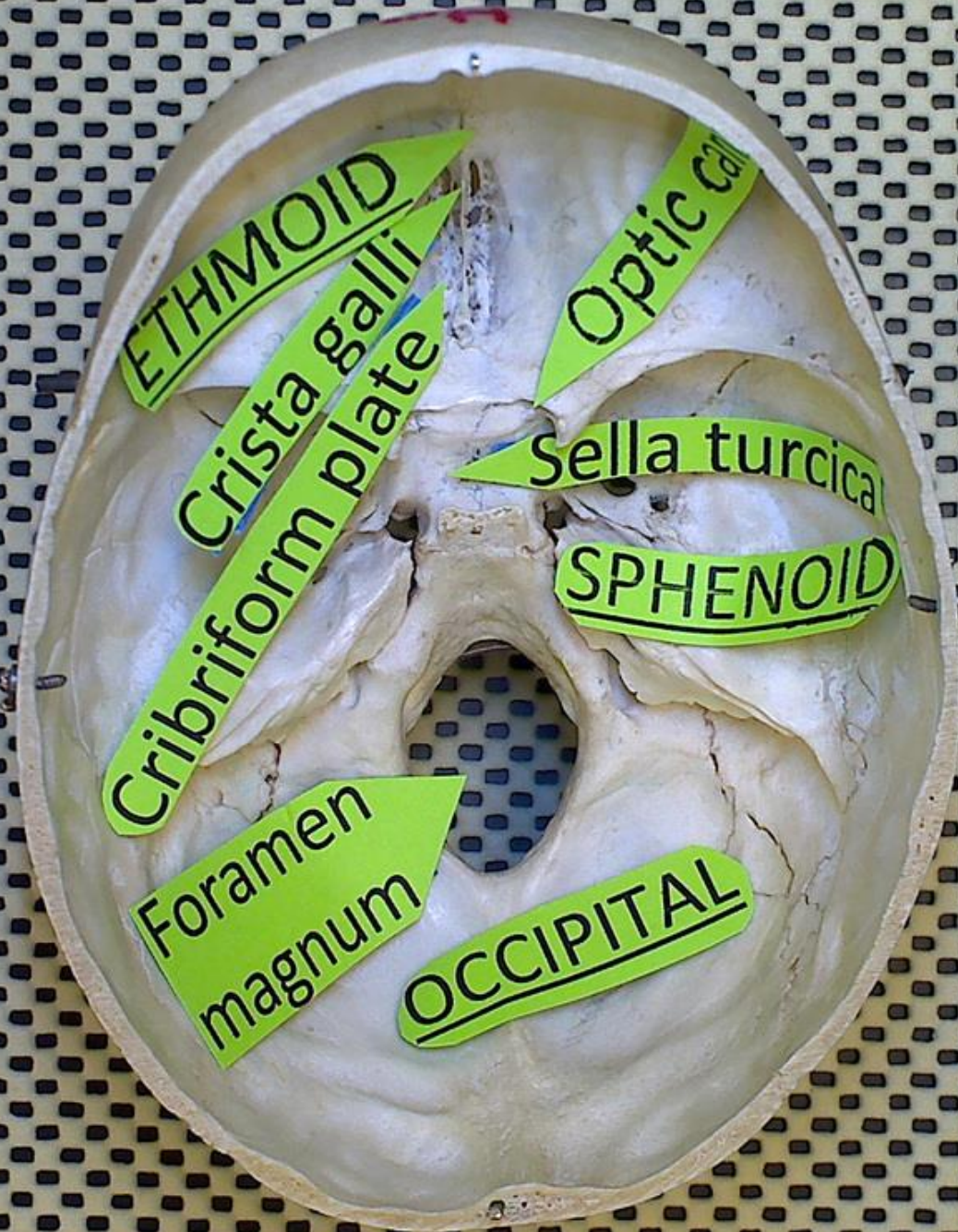
Foramen magnum

Occipital Condyle

PALATINE

VOMER

Palatine process



ETHMOID

Crista galli

Cribriform plate

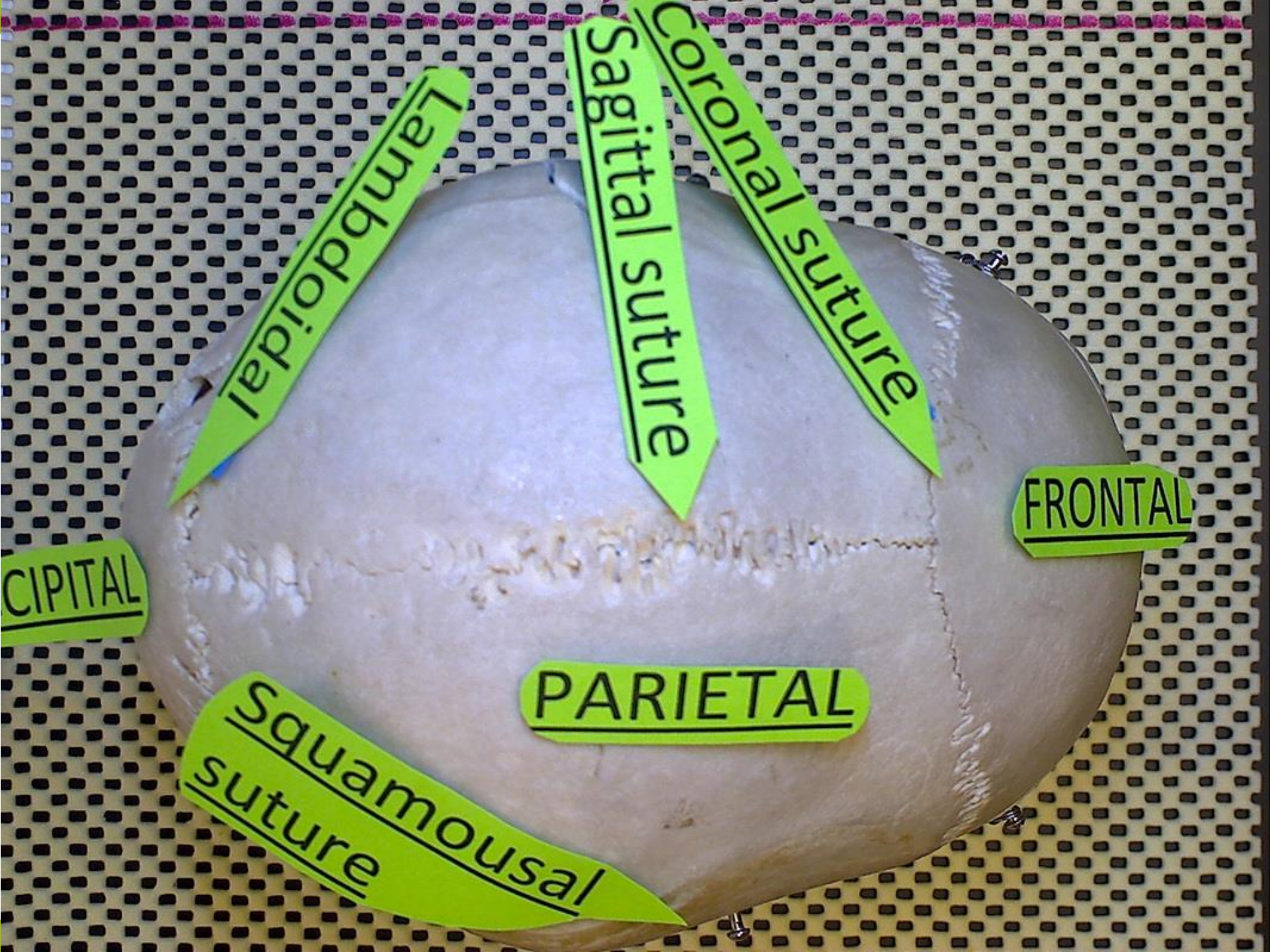
Foramen
magnum

Optic chiasm

Sella turcica

SPHENOID

OCCIPITAL



Lambdoidal

Coronal suture

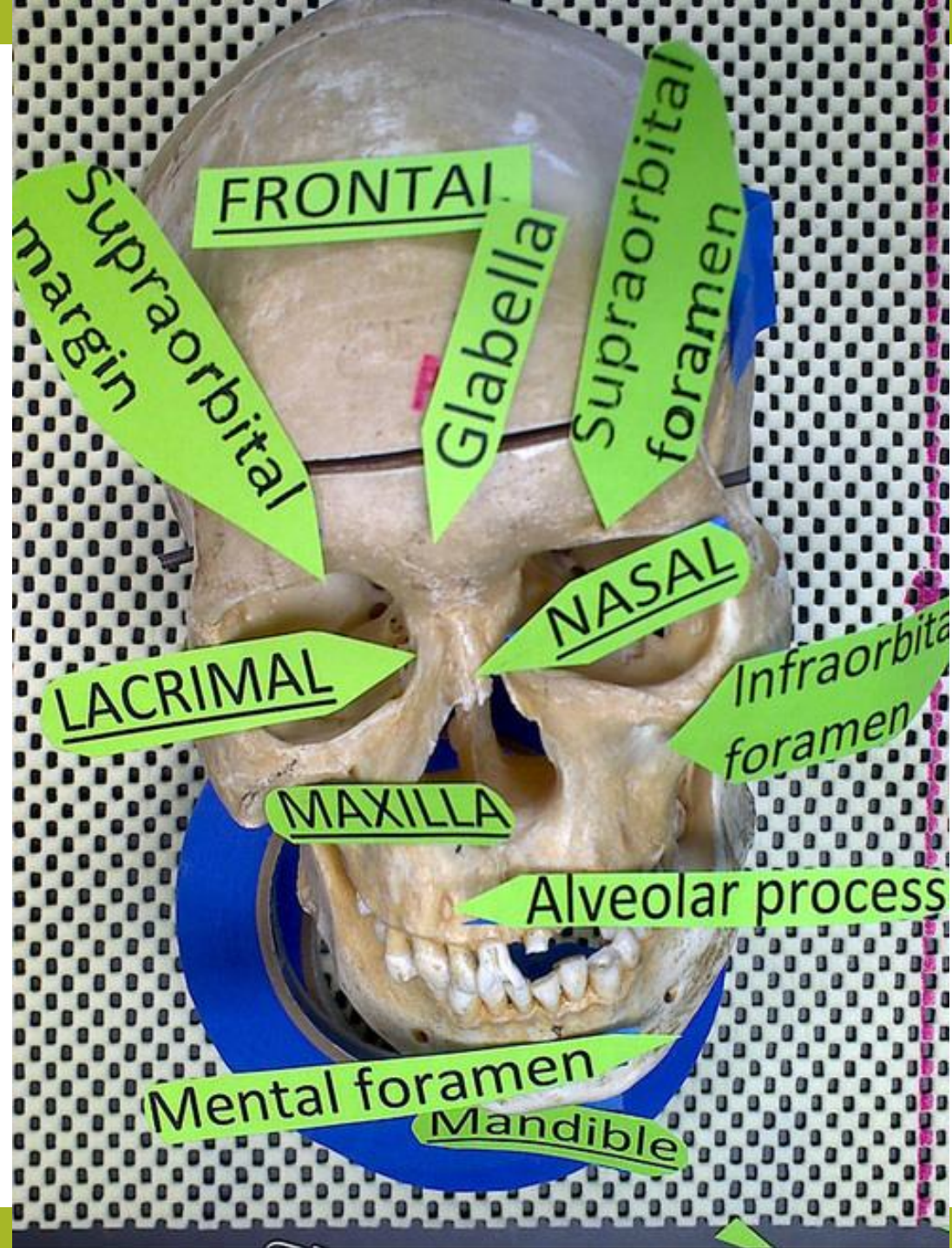
Sagittal suture

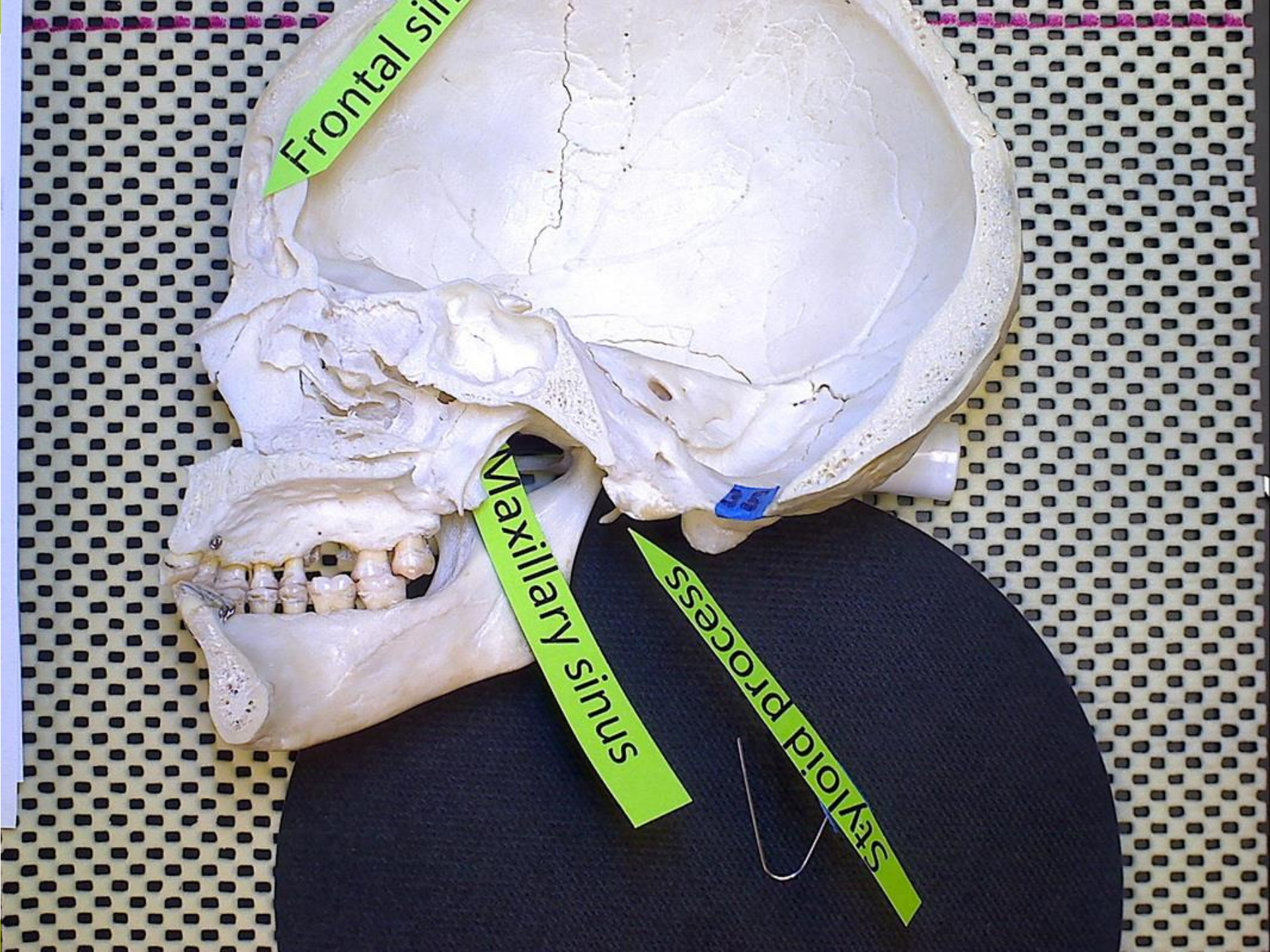
FRONTAL

CIPITAL

PARIETAL

Squamousal suture

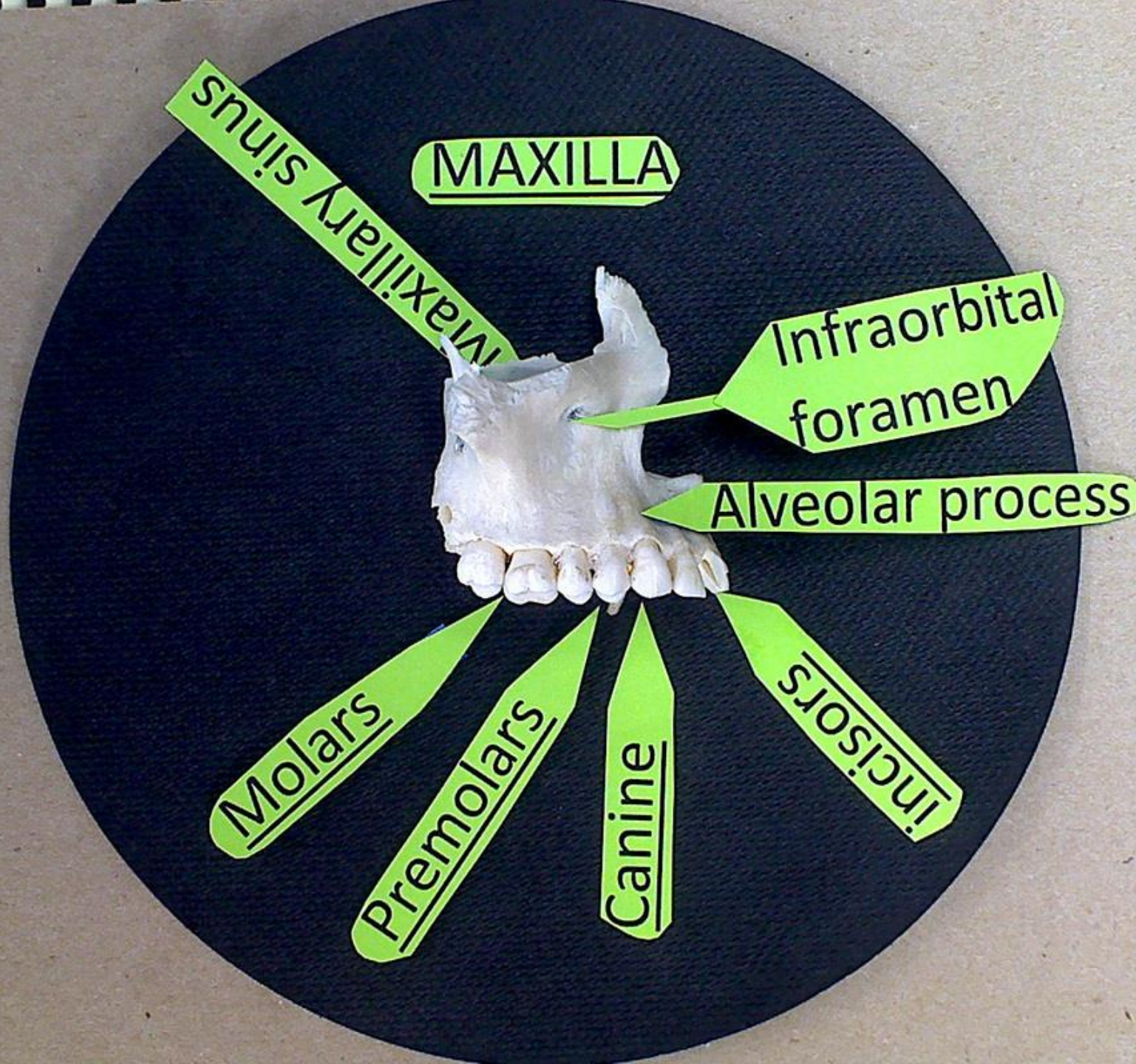




Frontal sinus

Maxillary sinus

Styloid process



MAXILLA

Maxillary sinus

Infraorbital foramen

Alveolar process

Molars

Premolars

Canine

Incisors

ZYGOMATIC



Maxillary
process

Zygomatofacial
foramen

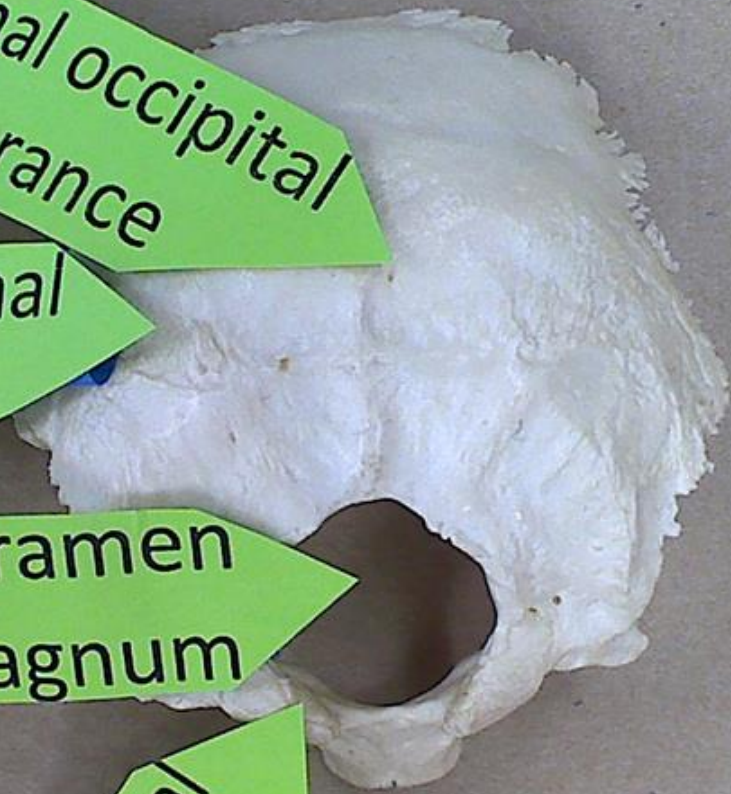
OCCIPITAL

External occipital
protuberance

Superior nuchal
line

Foramen
magnum

Occipital
Condyle



TEMPORAL

External acoustic
meatus

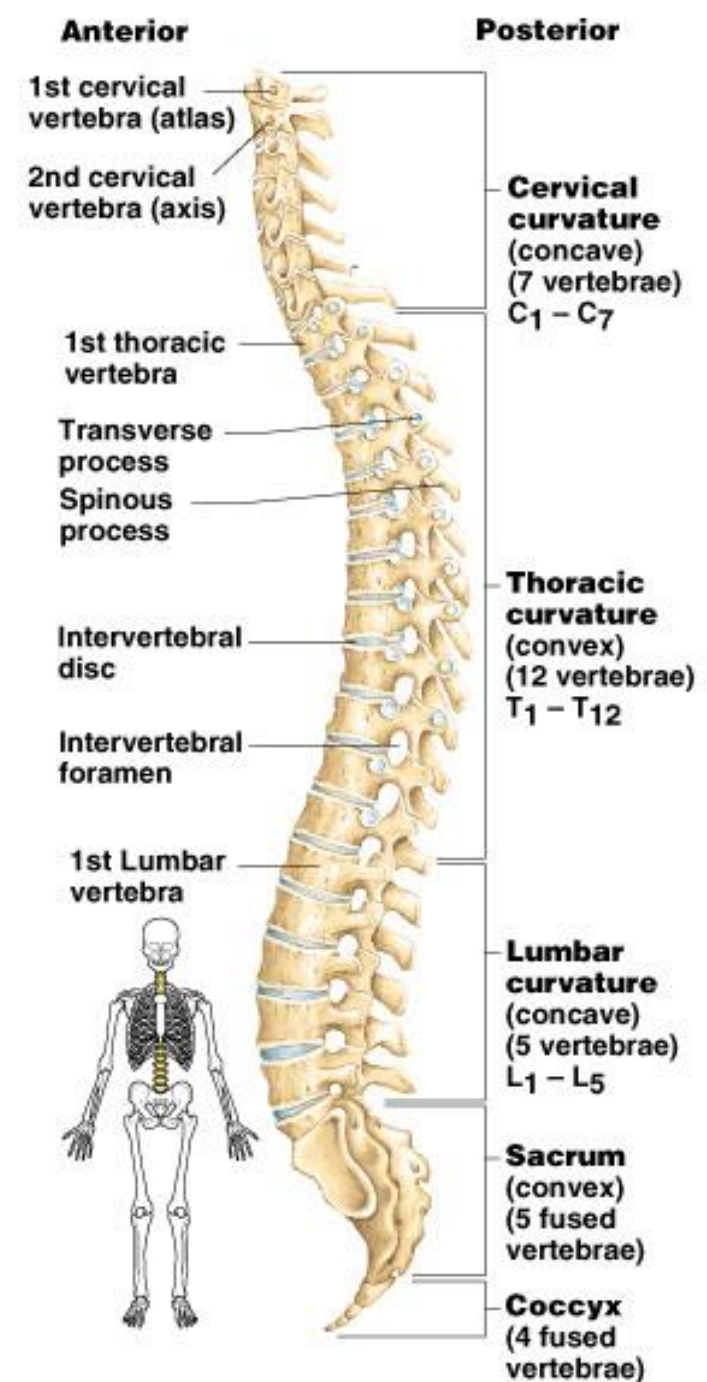
Mastoid process

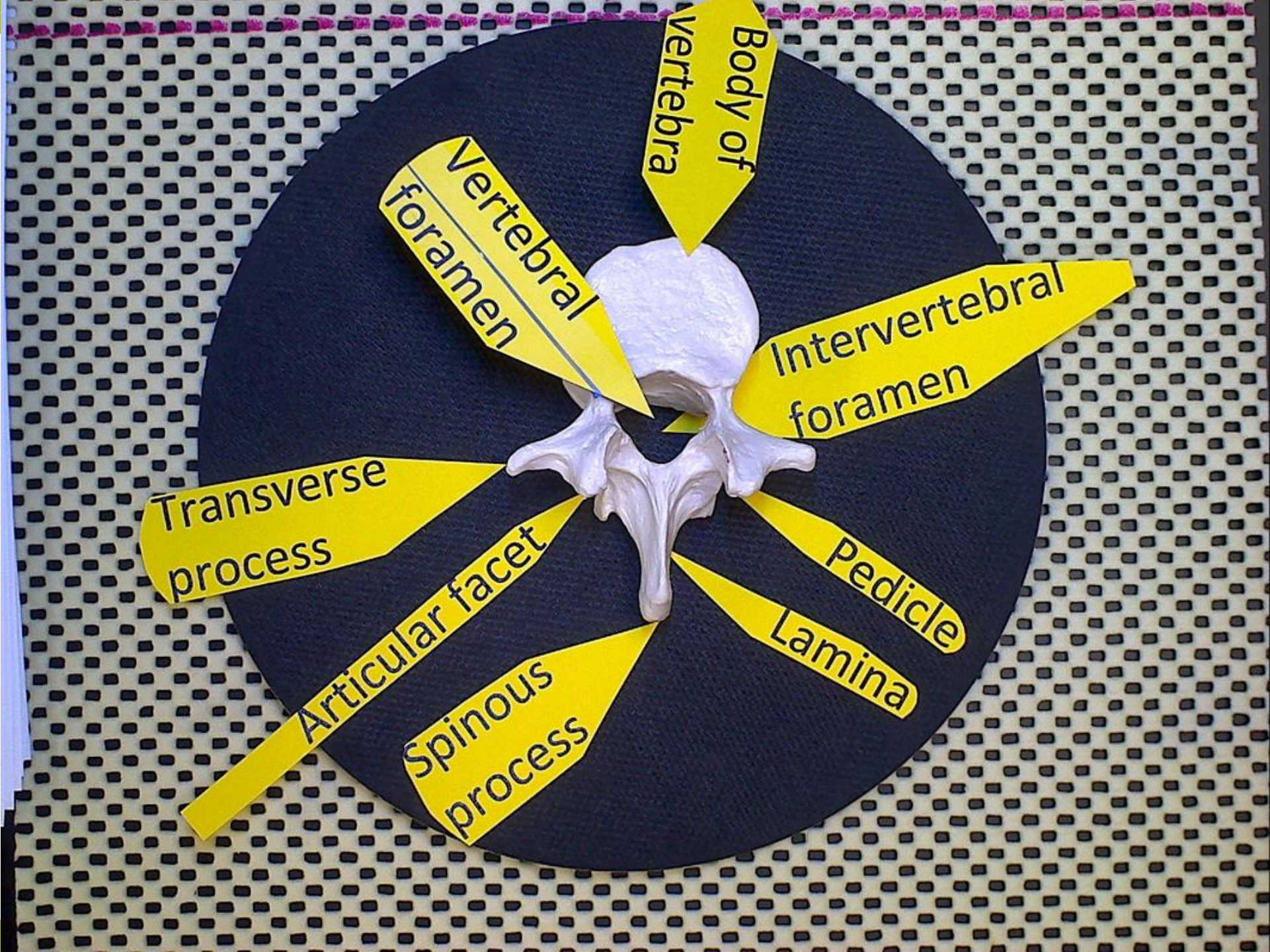
Styloid process

Mandibular
fossa



The Vertebral Column





Body of
vertebra

Vertebral
foramen

Intervertebral
foramen

Transverse
process

Articular facet

Spinous
process

Pedicle
Lamina

PARIETAL



VOMER



Coccyx



PALATINE



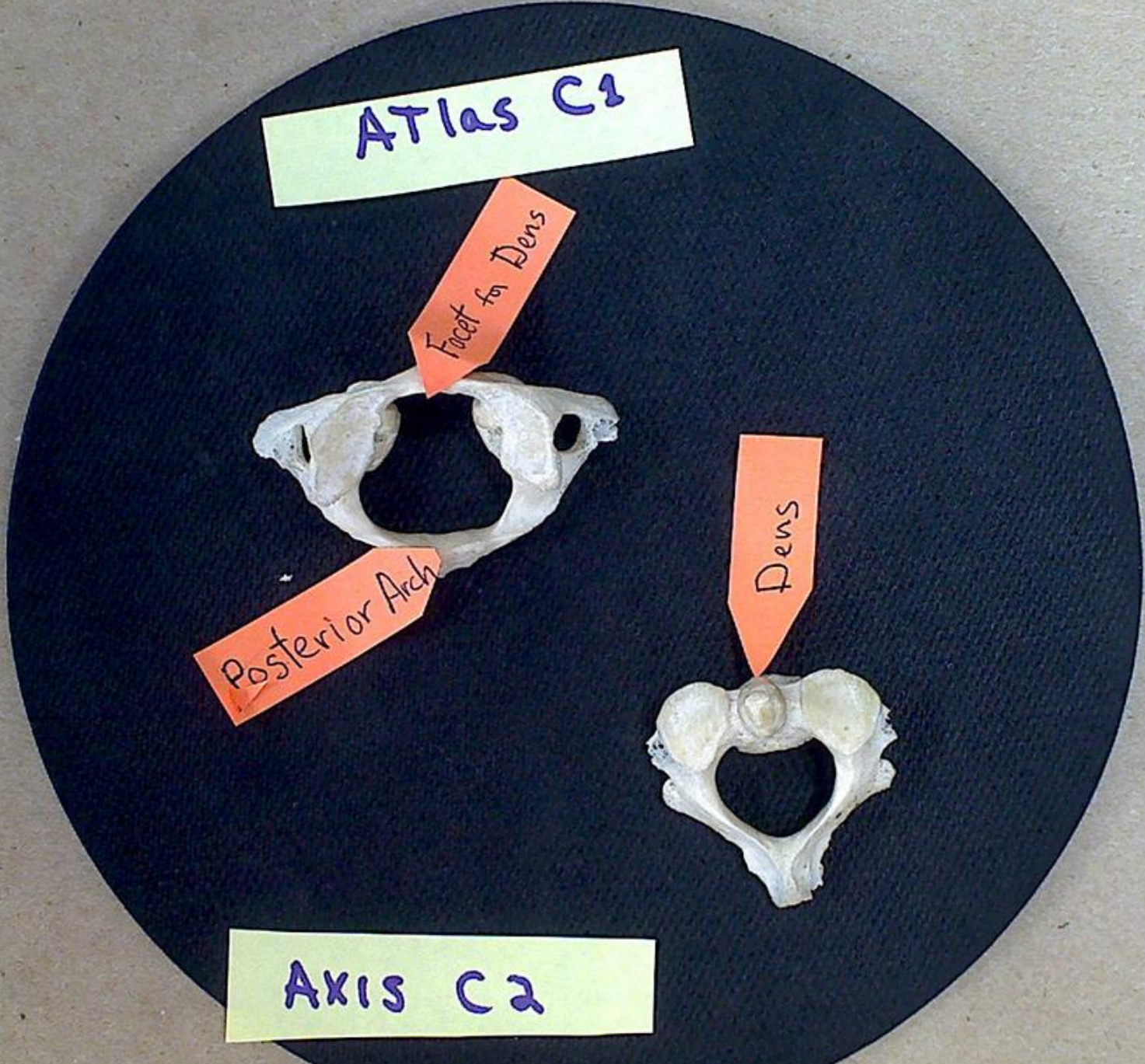
Atlas C1

Facet for Dens

Posterior Arch

Dens

Axis C2

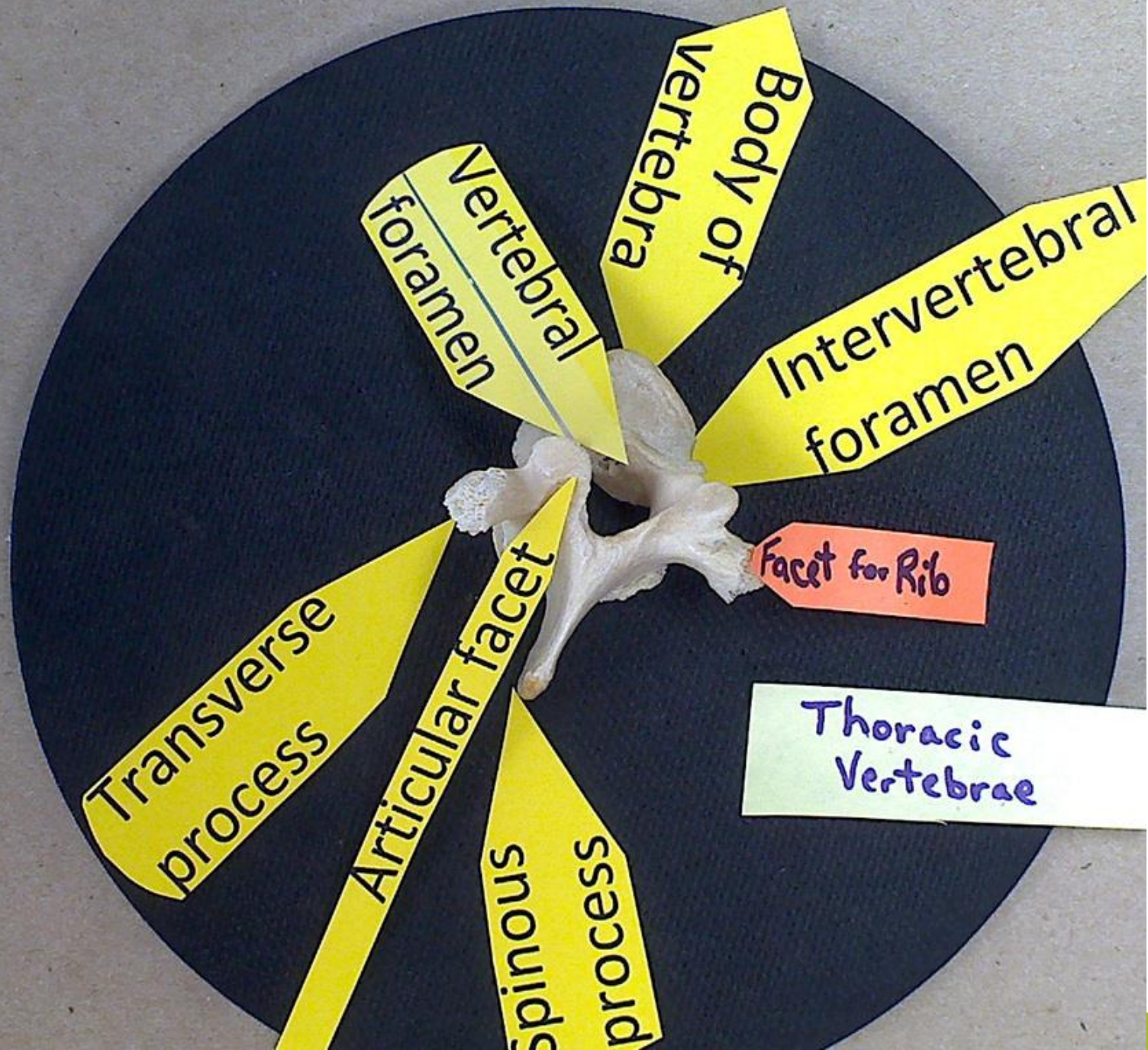


Sacroiliac
Joint Surface

Median
Sacral Crest

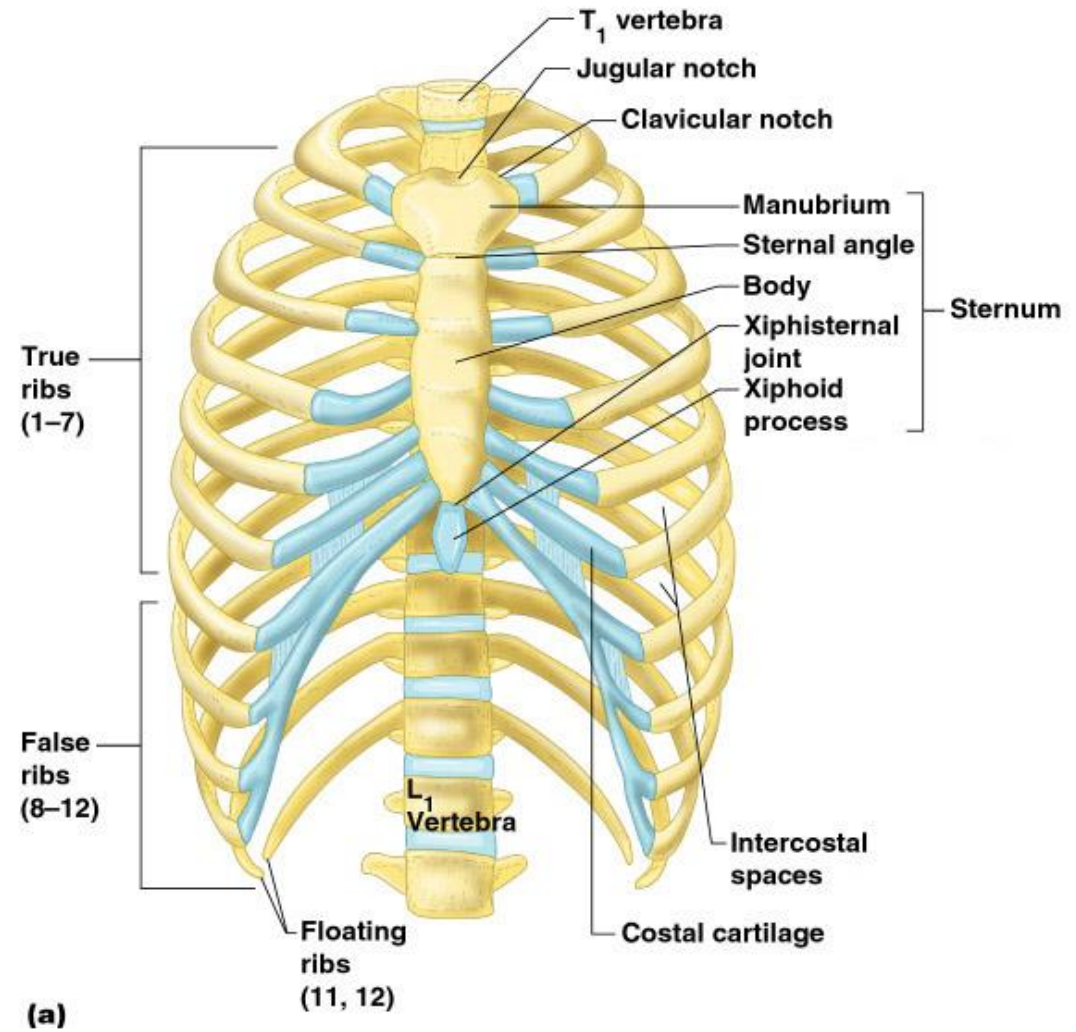
Sacrum





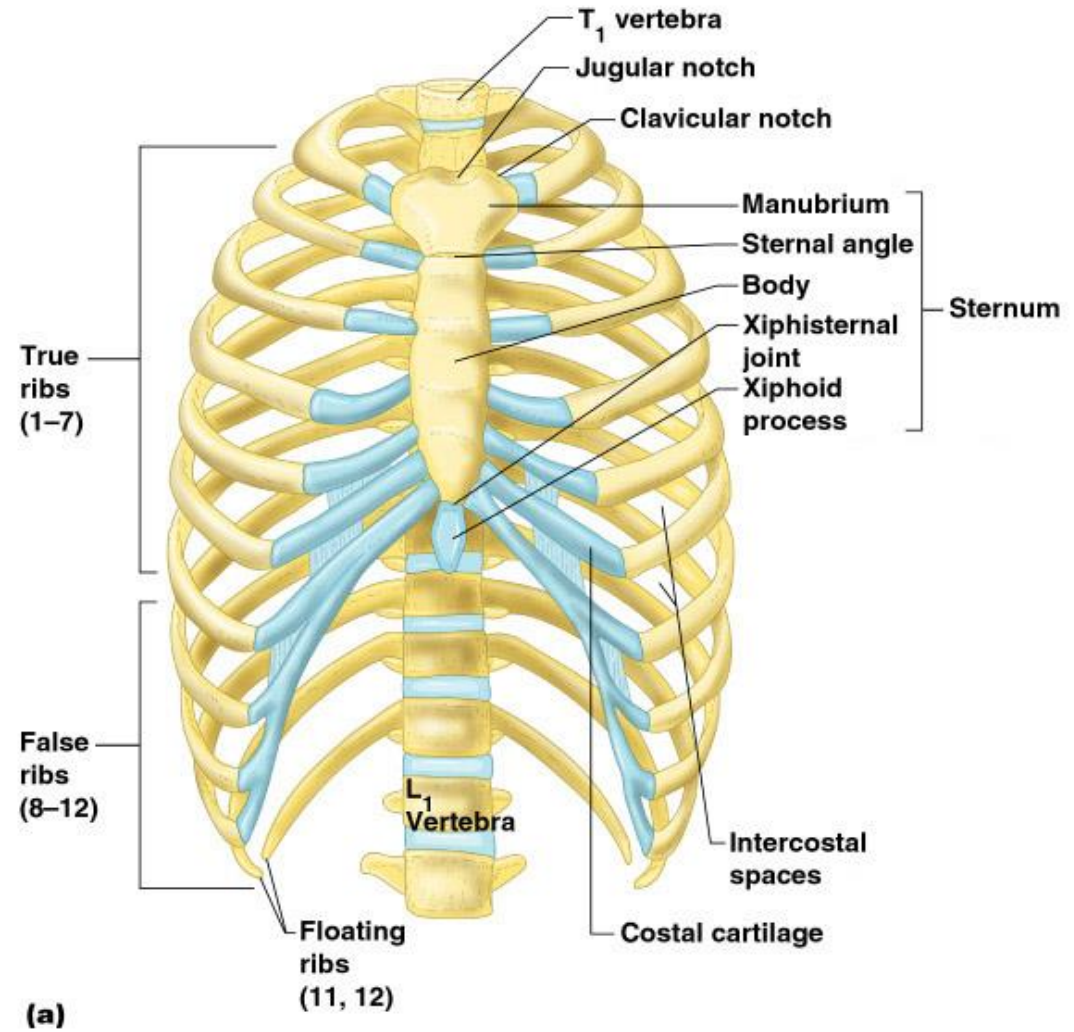
The Bony Thorax

- Forms a cage to protect major organs



The Bony Thorax

- Made-up of 3 parts:
 1. Sternum
 2. Ribs
 3. Thoracic Vertebrae

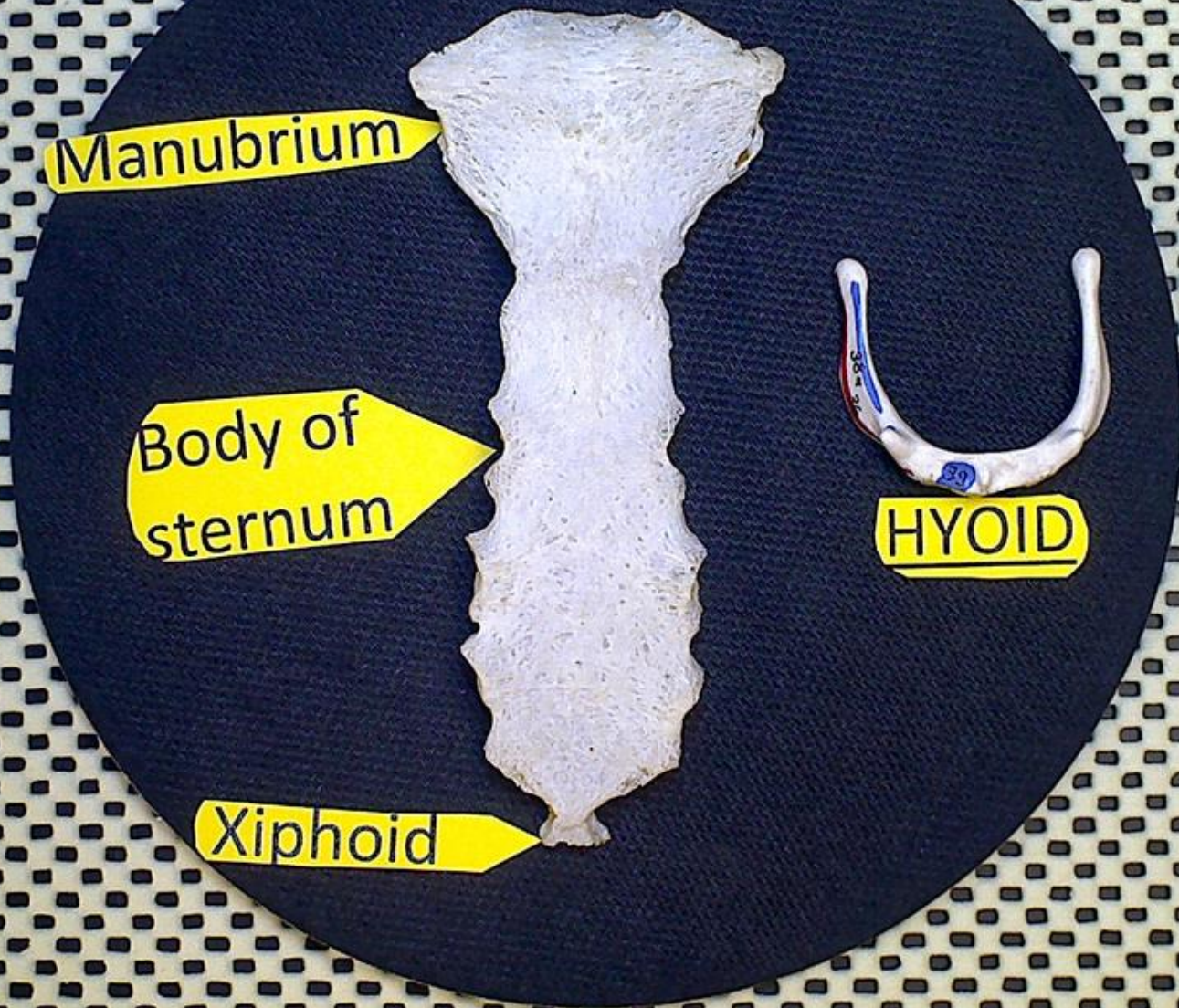


Manubrium

Body of
sternum

Xiphoid

HYOID



Facet for
Body of
vertebra

Facet for
(Transverse) of
vertebra

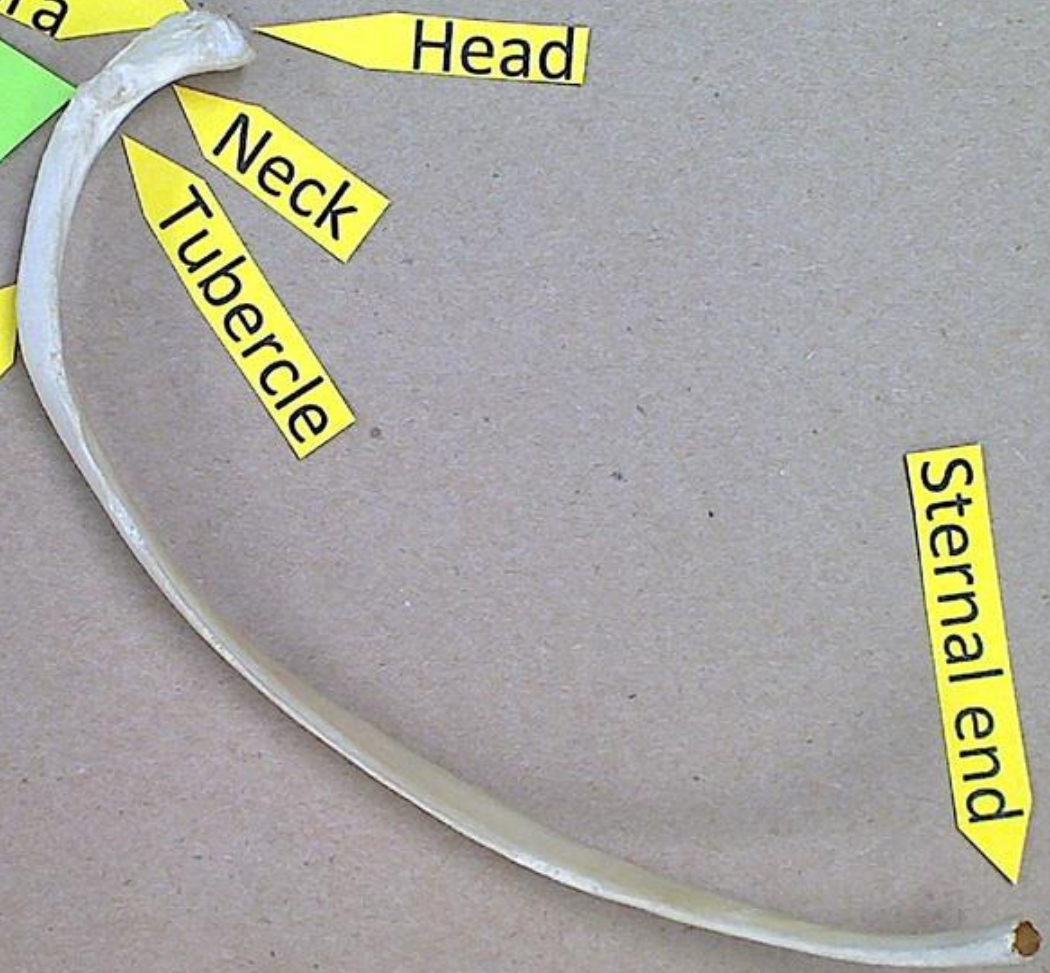
Head

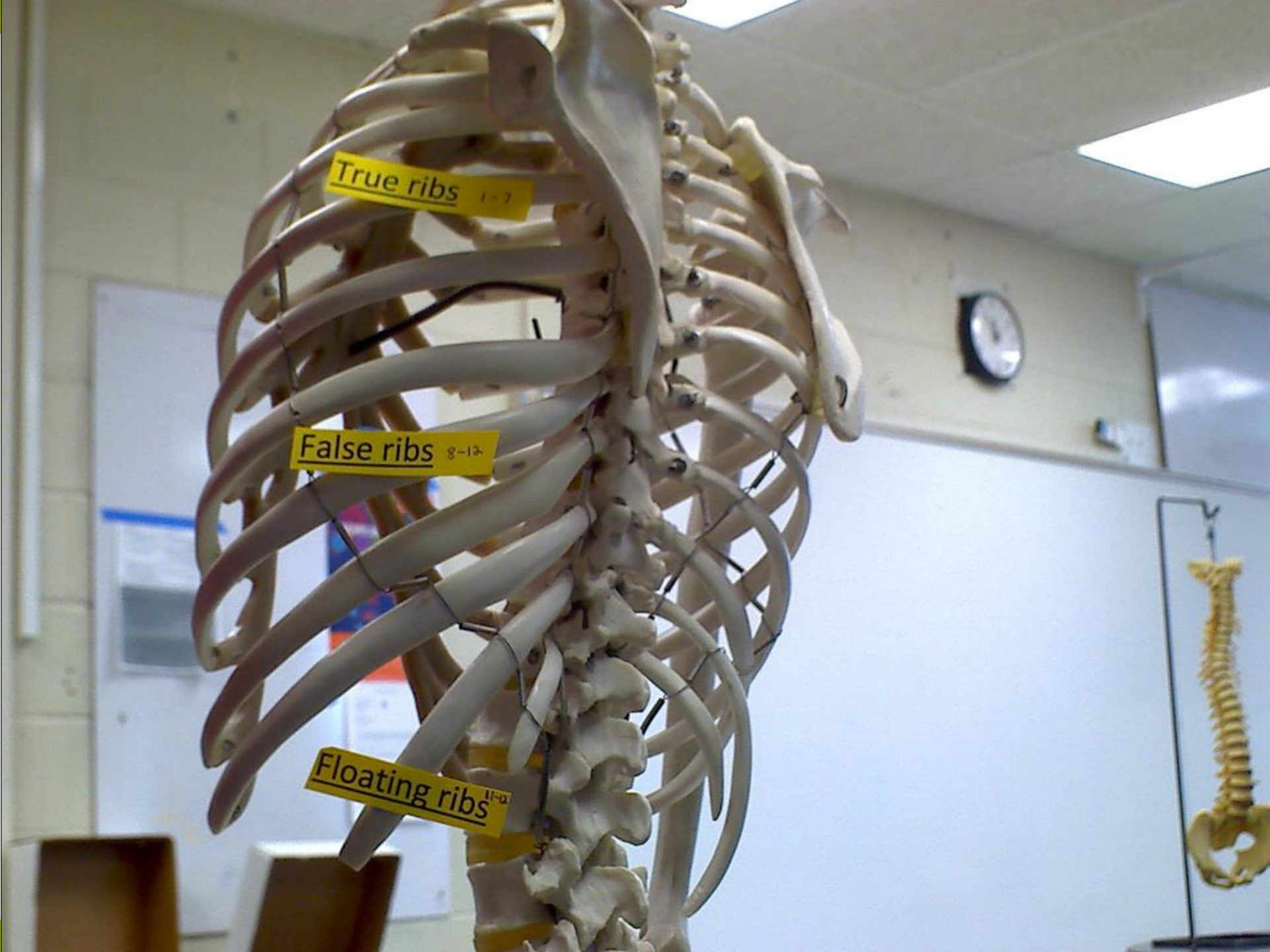
Neck

Tubercle

Angle

Sternal end





True ribs 1-7

False ribs 8-10

Floating ribs 11-12