

Anatomy & Physiology
Unit 3 – The Integumentary System

1. What does integument stand for?
 - A. Hair
 - B. Glands
 - C. Nails
 - D. Skin

2. Which of the following are the two parts of the cutaneous membrane?
 - A. Epidermis & Hypodermis
 - B. Dermis & Hypodermis
 - C. Epidermis & Dermis
 - D. Epidermis & Accessory

3. Which of the following is **NOT** a function of the skin?
 - A. Regulate body temperature
 - B. Protect from dehydration
 - C. Manufacture vitamin C
 - D. Storage of fat, glucose, water, and salt

4. What is another name for the hypodermis?
 - A. Lowdermis
 - B. Superdermis
 - C. Subcutaneous
 - D. Cutaneous

5. Which of the following is **NOT** contained in the dermis?
 - A. Endocrine Glands
 - B. Hair follicle
 - C. Nerves
 - D. Muscles

6. What is the job of the hypodermis?
 - A. Anchor skin to underlying organs, bones, and muscles
 - B. Produce hair follicles
 - C. Produce oil glands
 - D. Produce sweat glands

Using Figure 1, answer questions 7-10.

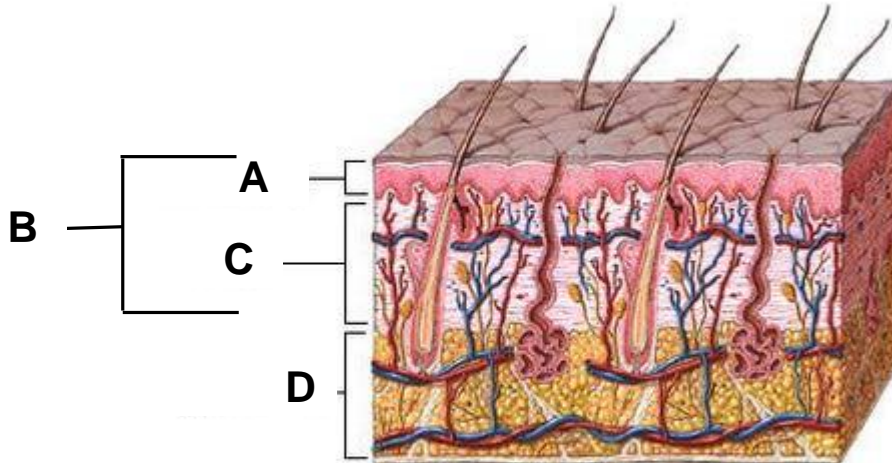


Figure 1

- 7. Cutaneous Layer
- 8. Dermis
- 9. Epidermis
- 10. Subcutaneous Layer

Match the term to its definition.

Layer	Definition
11. Stratum Corneum	A. Deepest portion of the epidermis; highly mitotic and produces new skin layer
12. Papillary Layer	B. Derives its name from protein granules contained in the cells and is superficial to the stratum spinosum
13. Stratum Granulosum	C. Upper region of the dermis that has fingerlike projections called dermal papillae that create fingerprints and are important for grip
14. Stratum Spinosum	D. Epidermal layer superficial to the stratum basale; slightly mitotic and consists of 8-10 layers of cells
15. Reticular Layer	E. Most superficial stratum of the epidermis; exposed skin; completely keratinized; tough waterproofing protection
16. Stratum Lucidum	F. Deepest layer of skin that contains blood vessels, adipose, sweat glands, oil glands, and deep pressure receptors
17. Stratum Basale	G. Only found in thicker epidermis and completely keratinized; clear, thin zone above the stratum granulosum

Match the term to its definition.

Term	Definition
18. Keratinocytes	A. Cells in the epidermis that are part of the immune system
19. Langerhans Cells	B. Produce keratin, a waterproofing protein, and produce calluses
20. Melanocytes	C. Produce melanin which prevents DNA mutation from UV radiation

Using figure 2, answer questions 21-25.

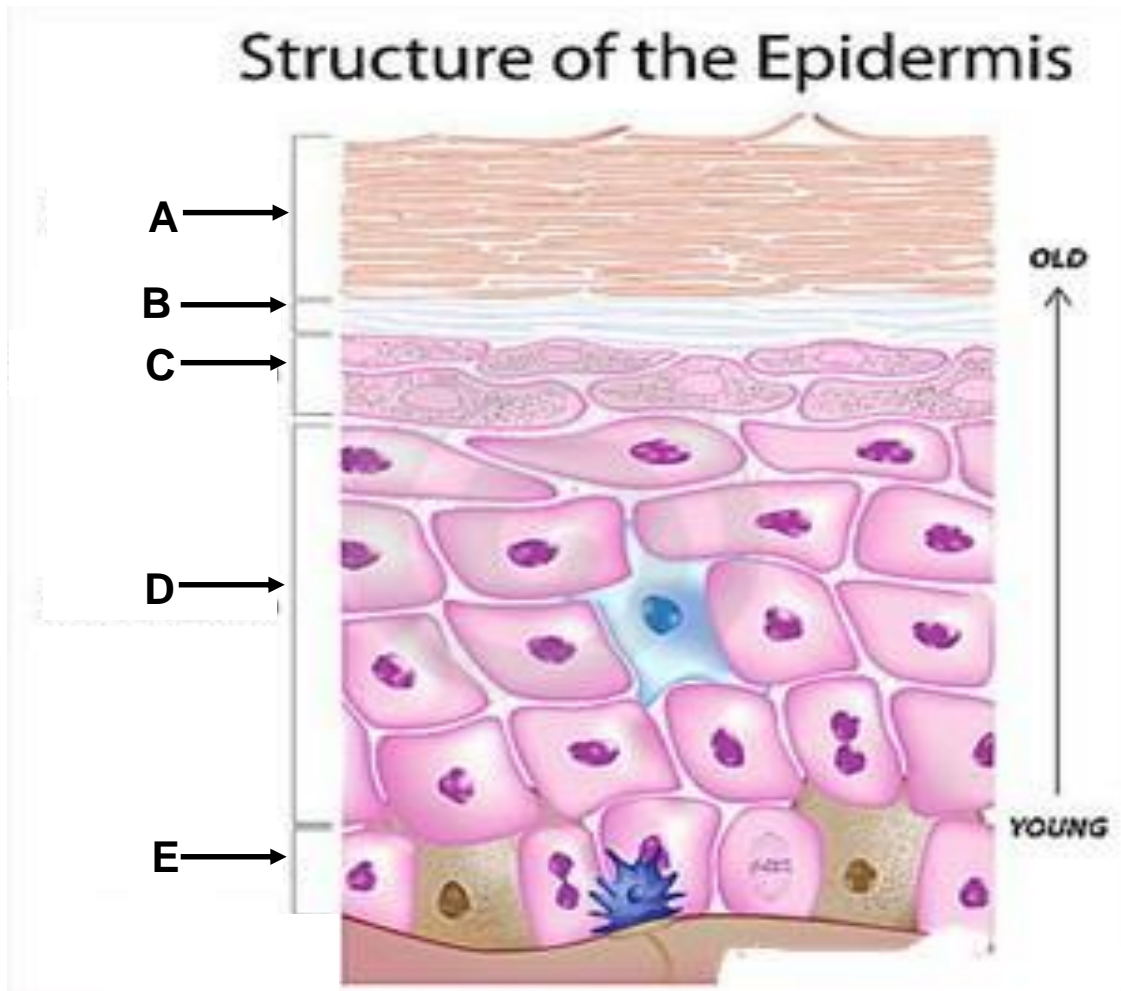


Figure 2

- 21. Stratum Basale
- 22. Stratum Lucidum
- 23. Stratum Corneum
- 24. Stratum Spinosum
- 25. Stratum Granulosum