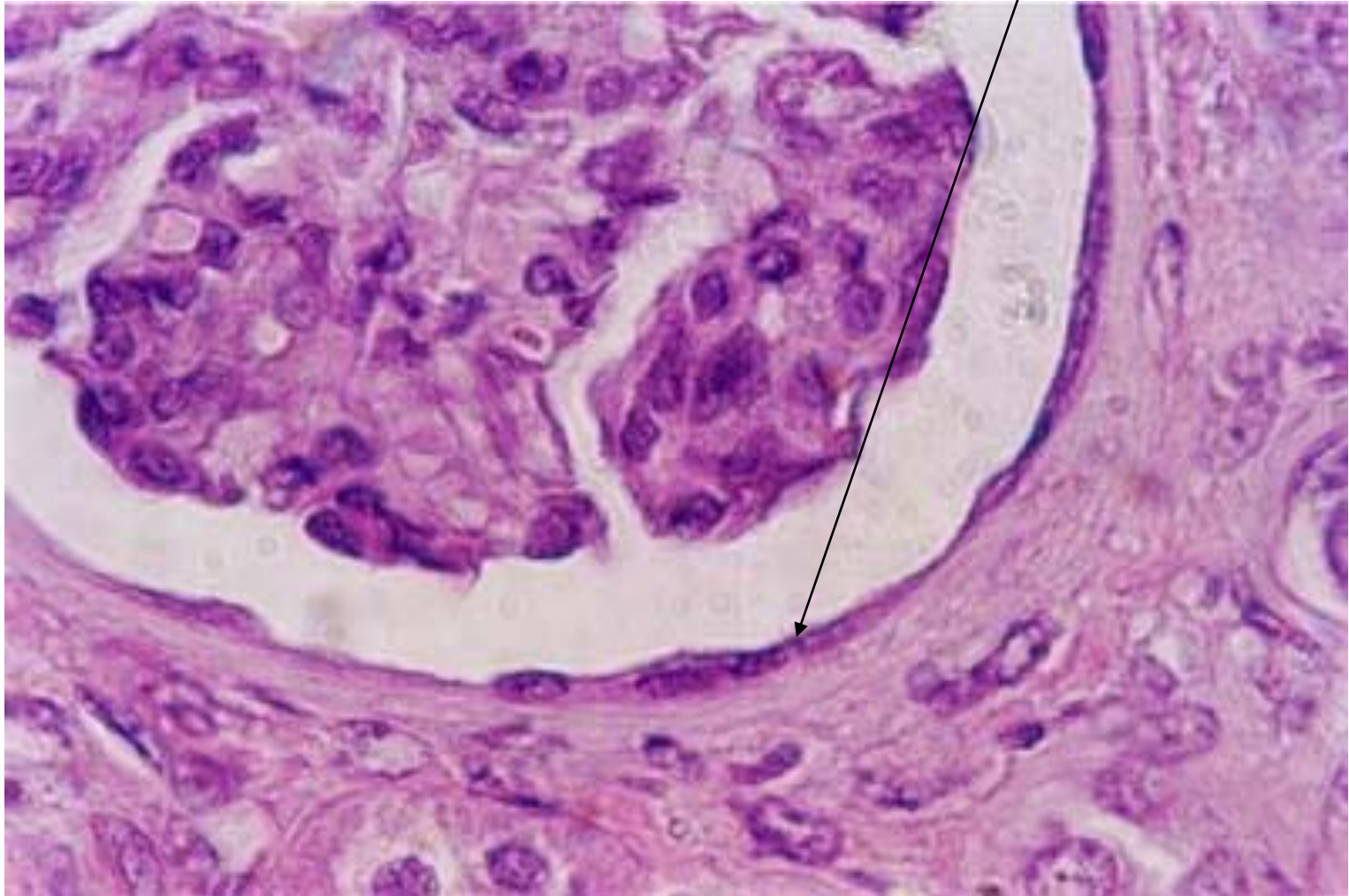


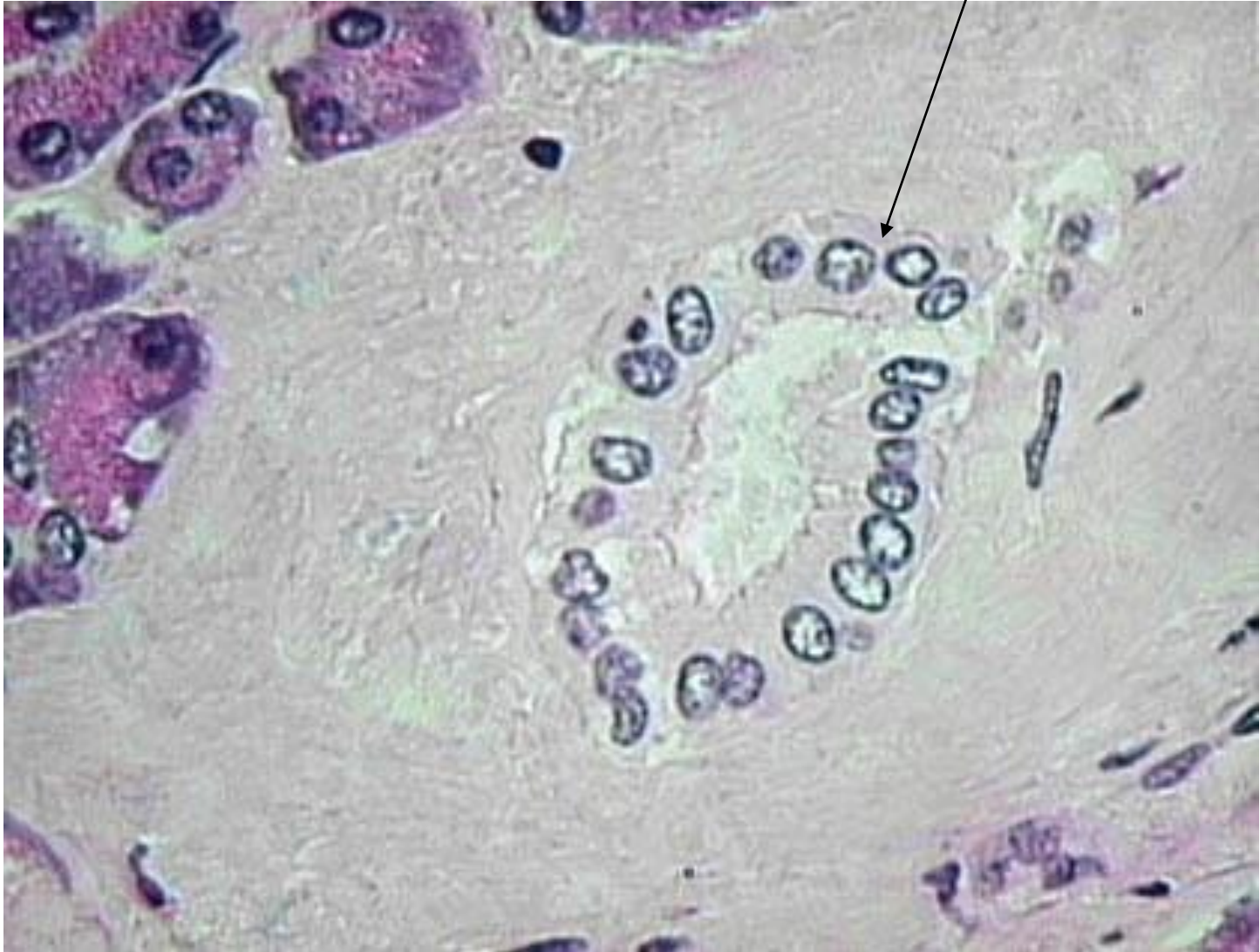
# Epithelial Tissue

Histology

# Simple Squamous



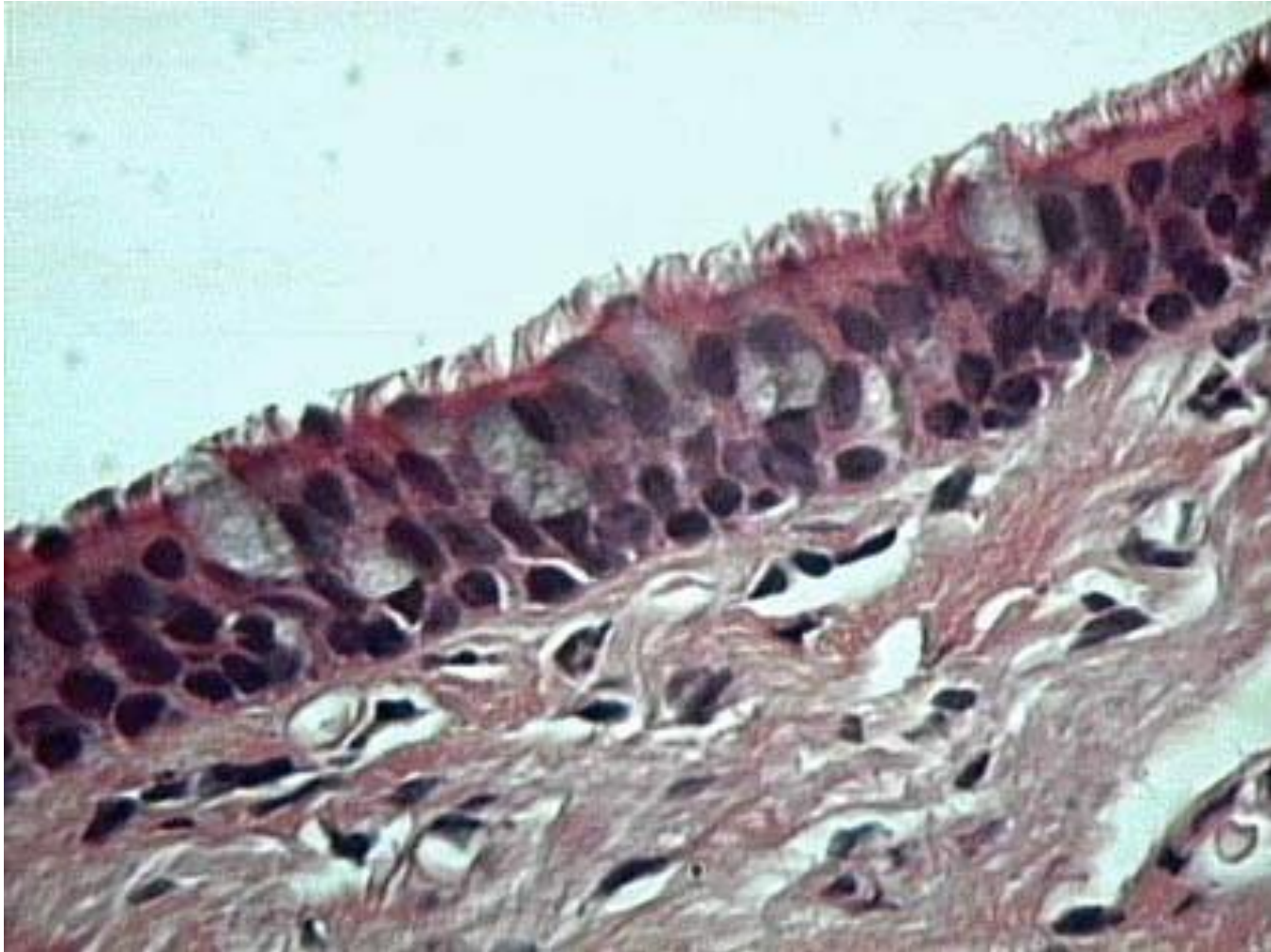
# Simple Cuboidal



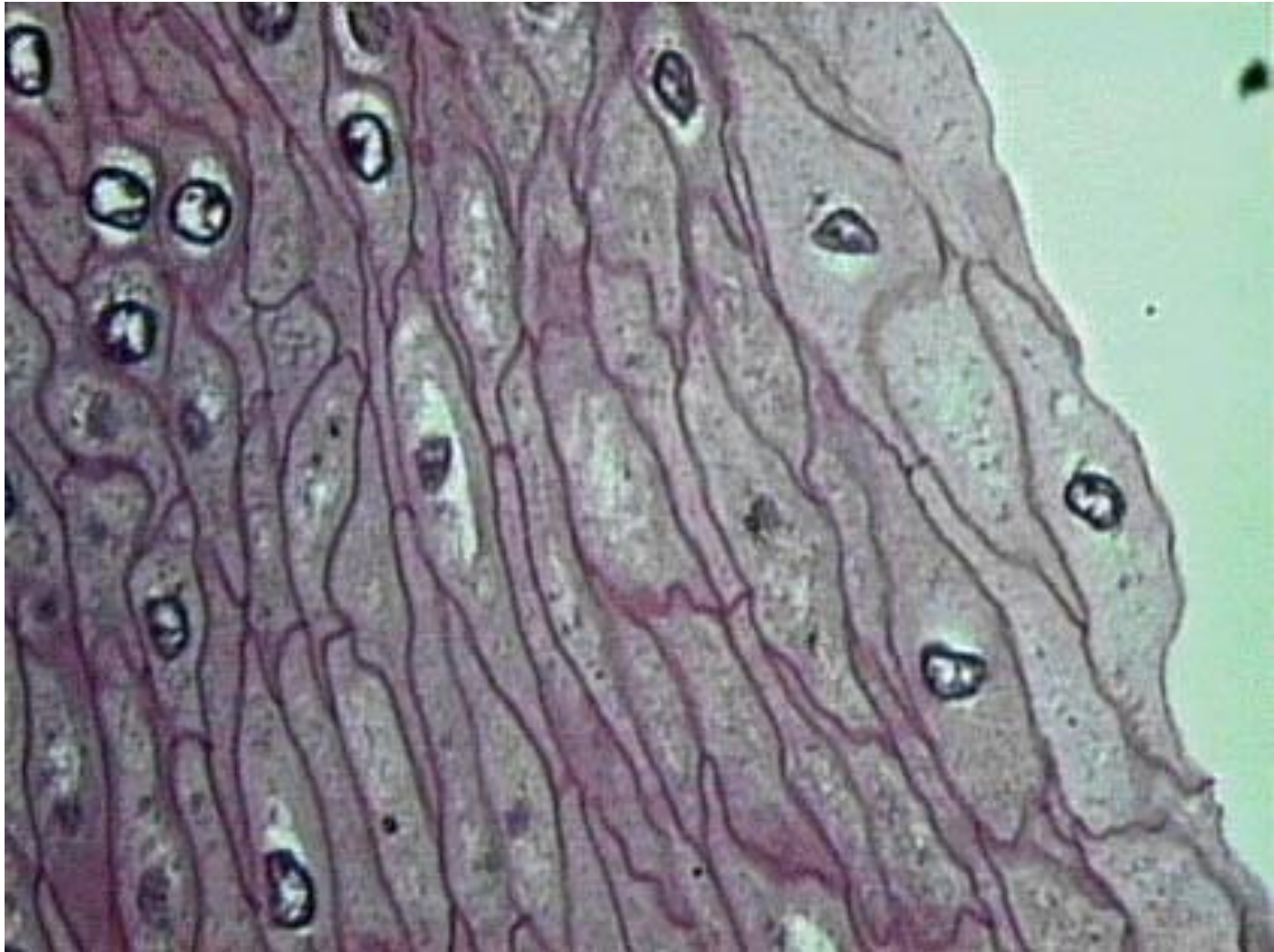
# Simple Columnar



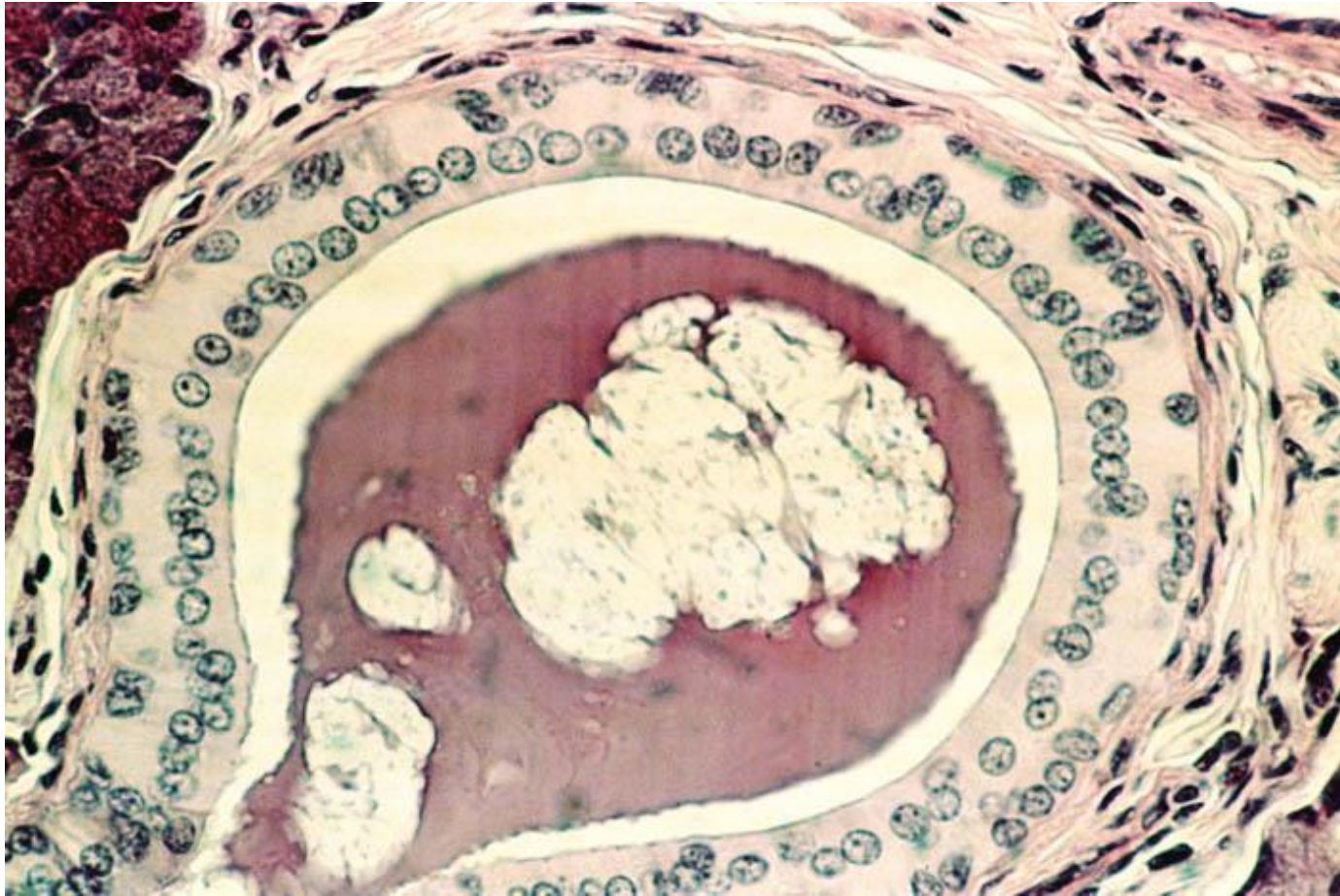
# Pseudostratified Columnar



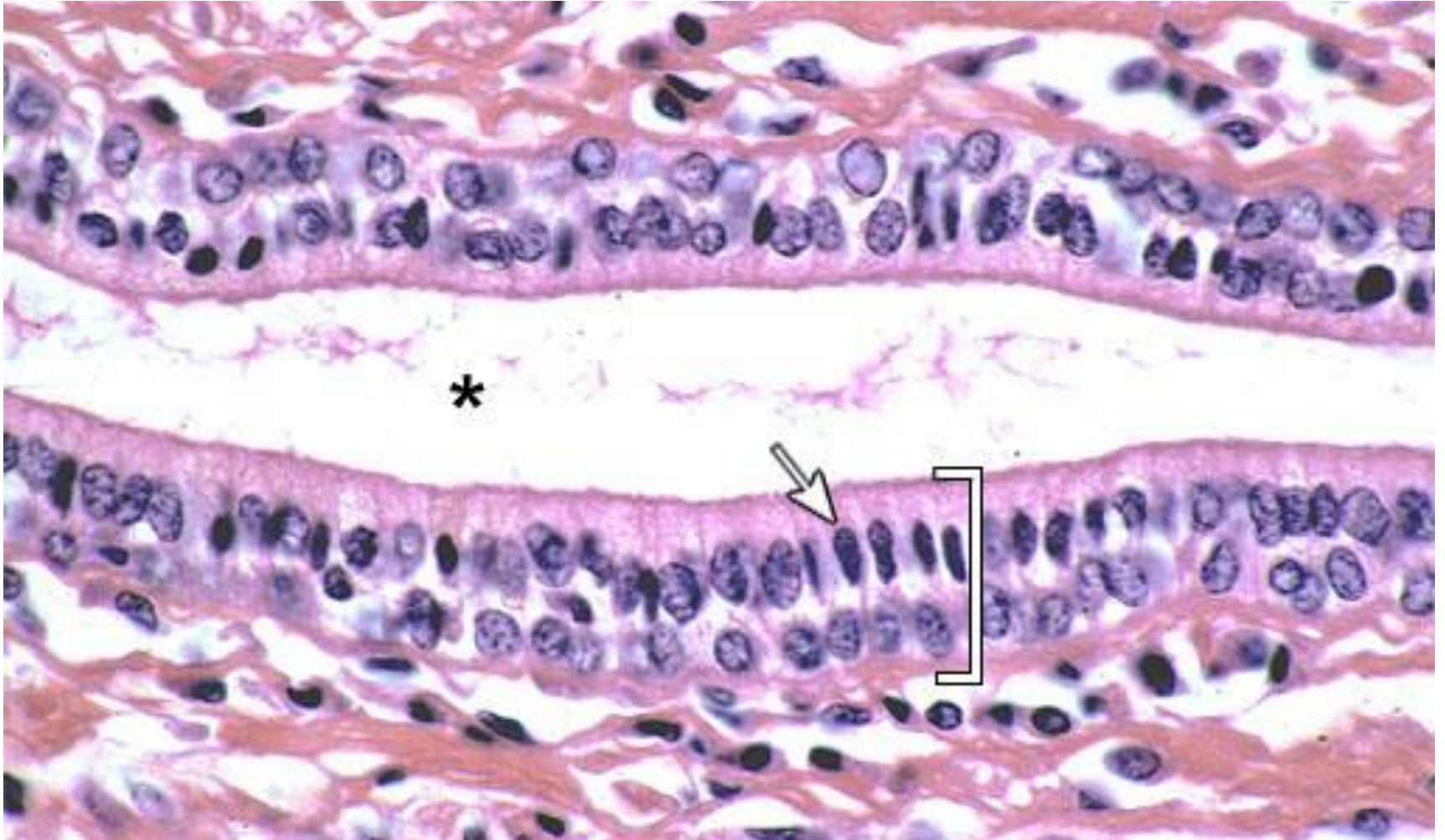
# Stratified Squamous



# Stratified Cuboidal

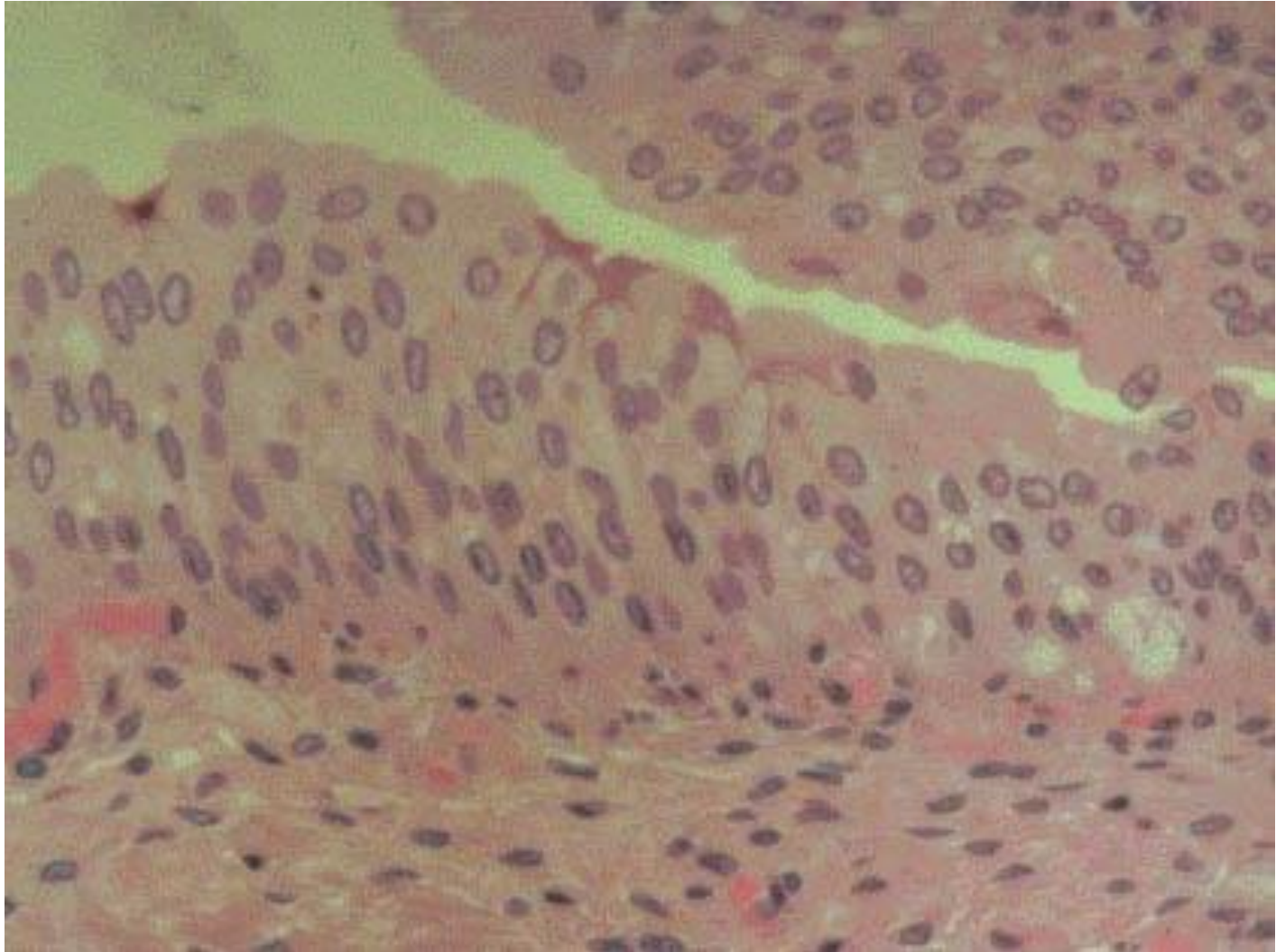


# Stratified Columnar

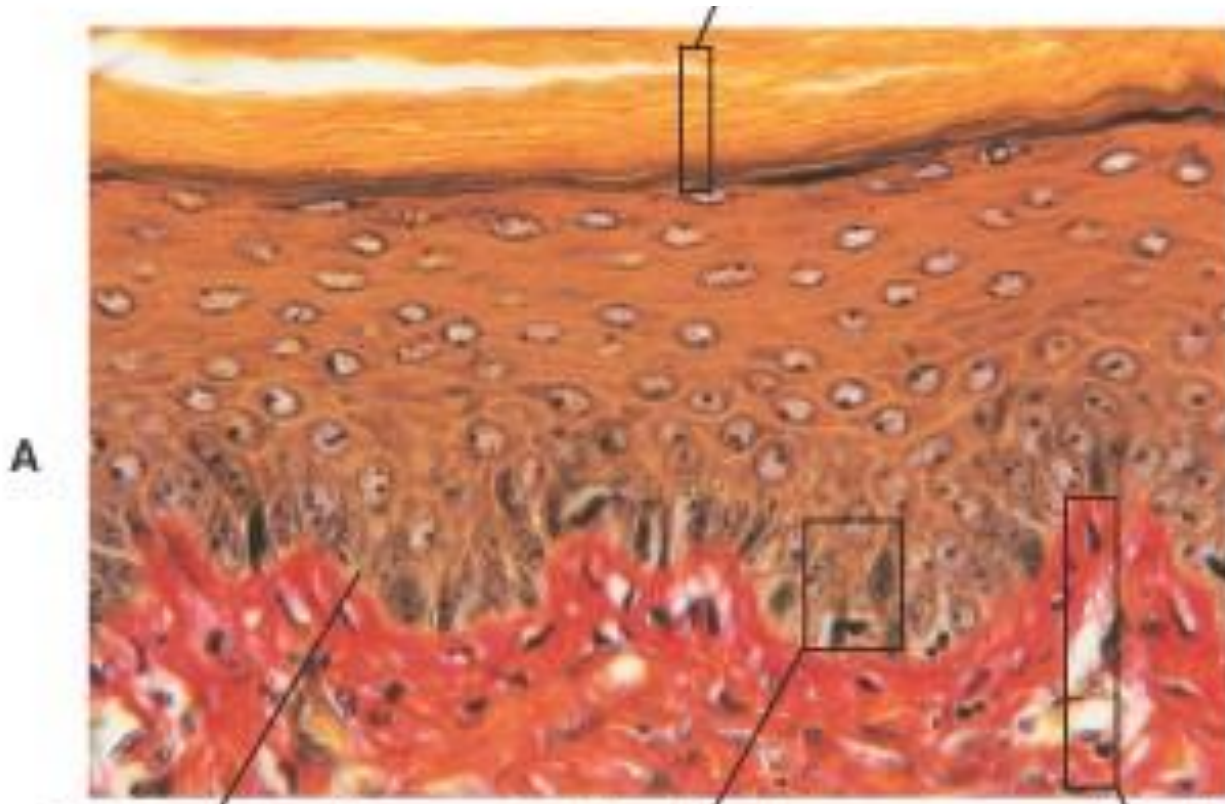




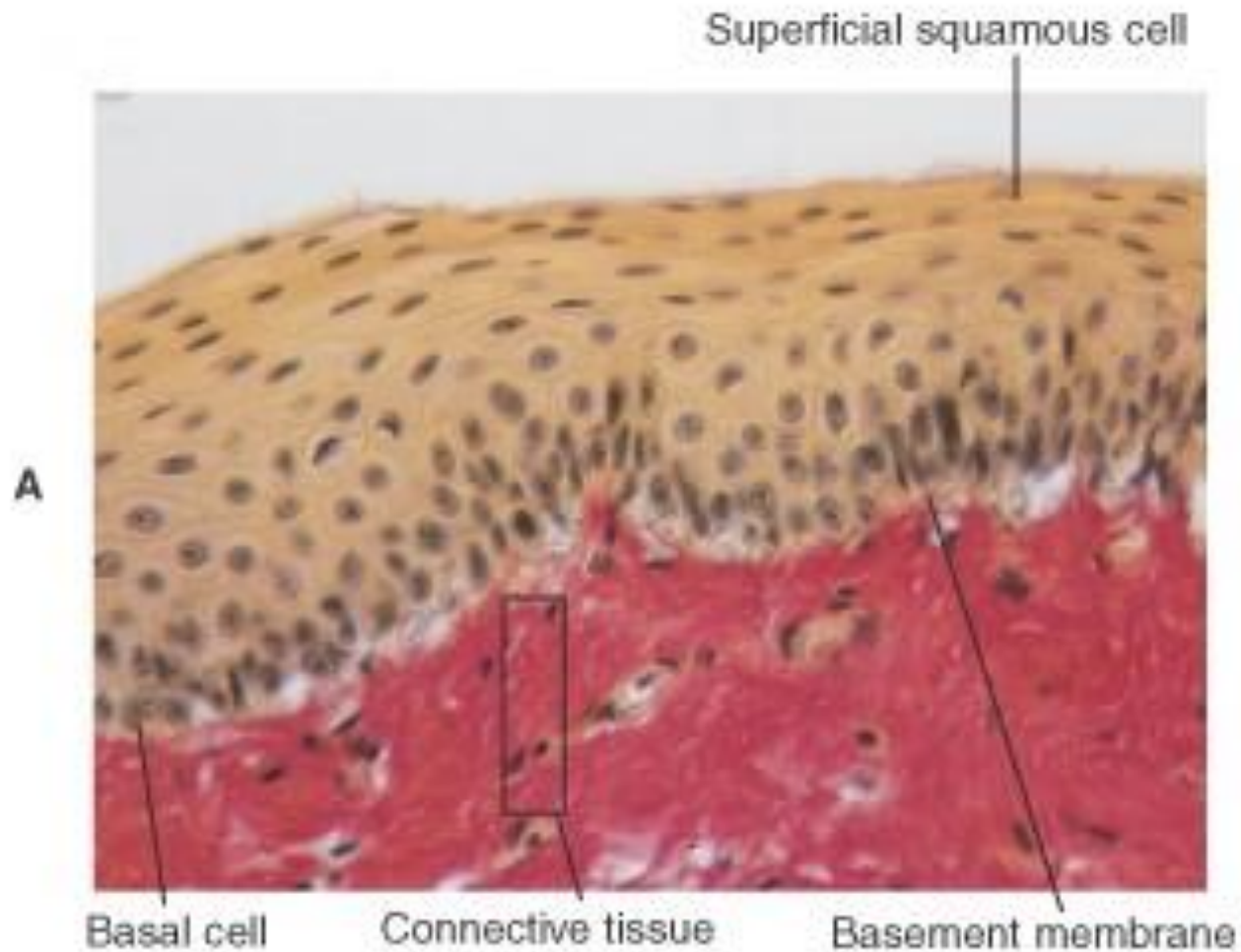
# Transitional



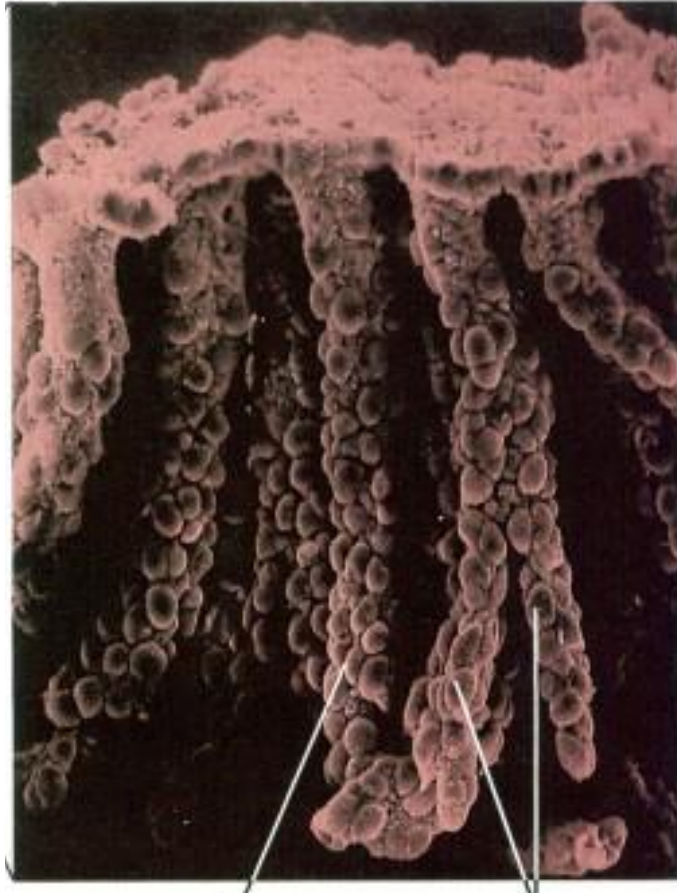
# Stratified Squamous Keratinized



# Stratified Squamos Nonkeratinized



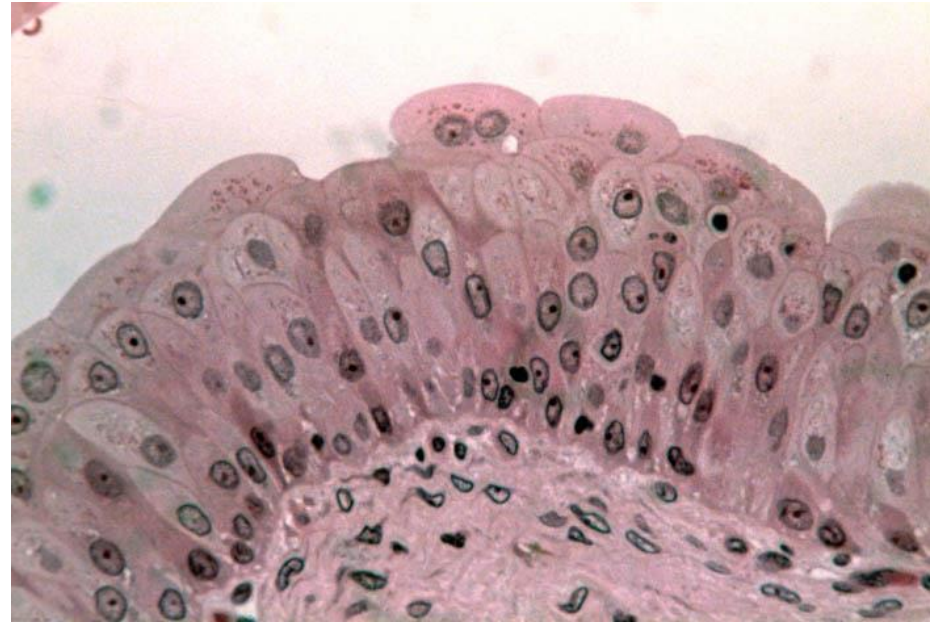
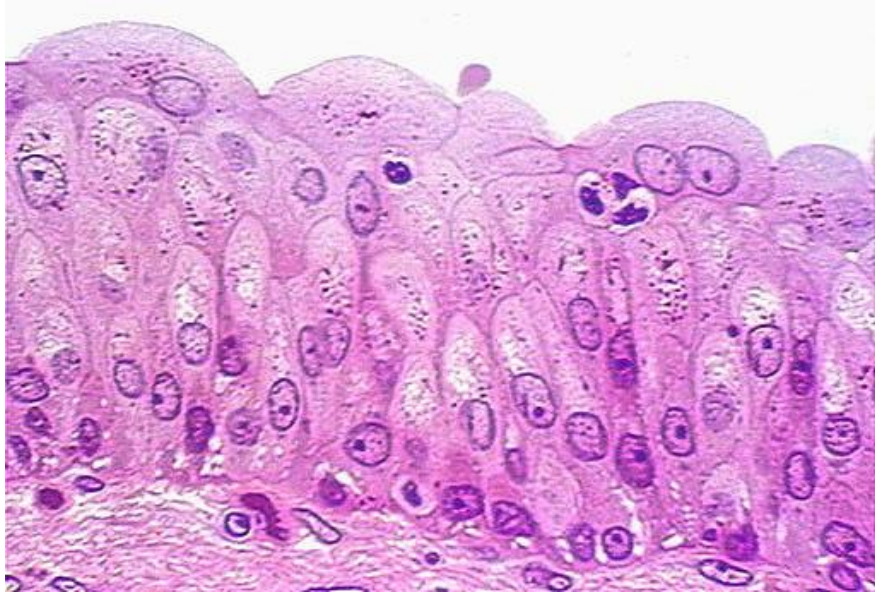
# Exocrine Gland



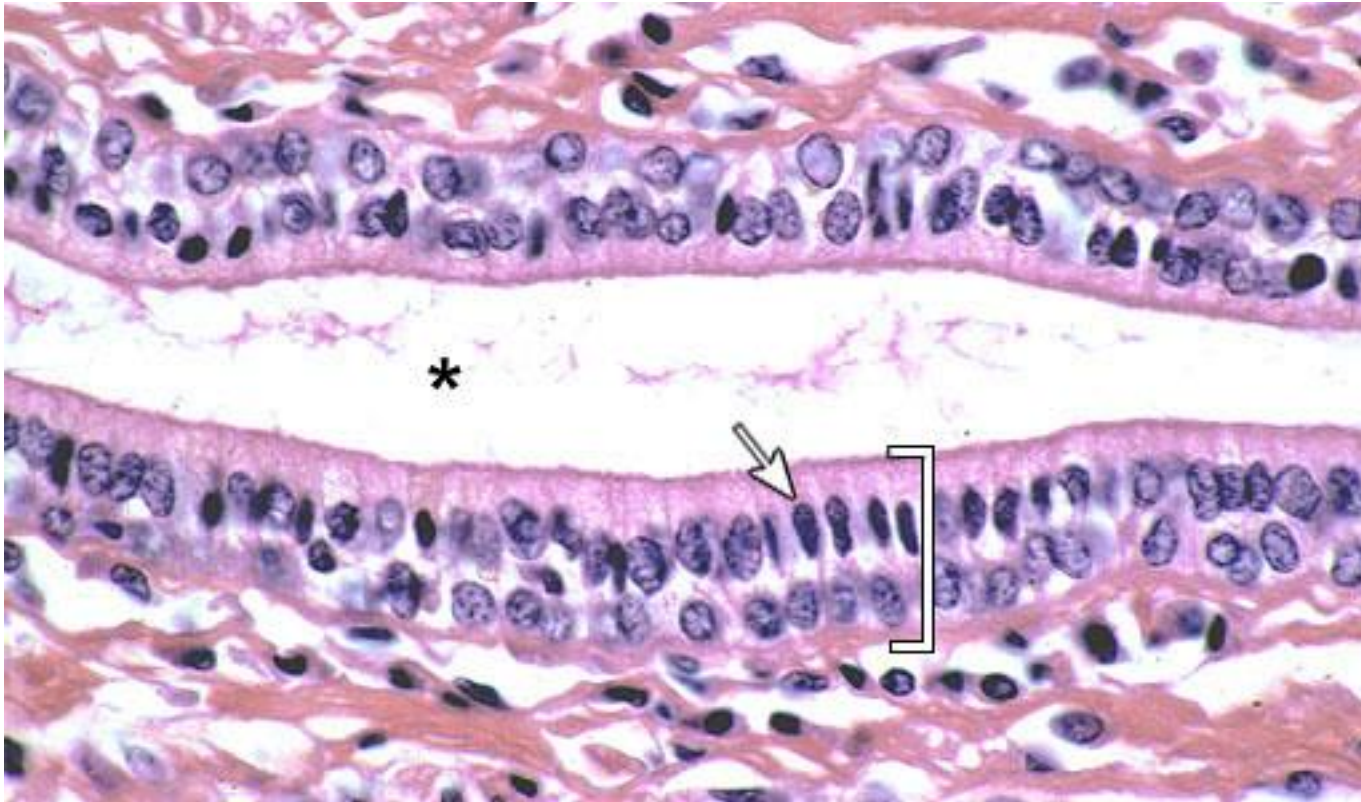
# Practice on Epithelial Tissues

Answers at end of section

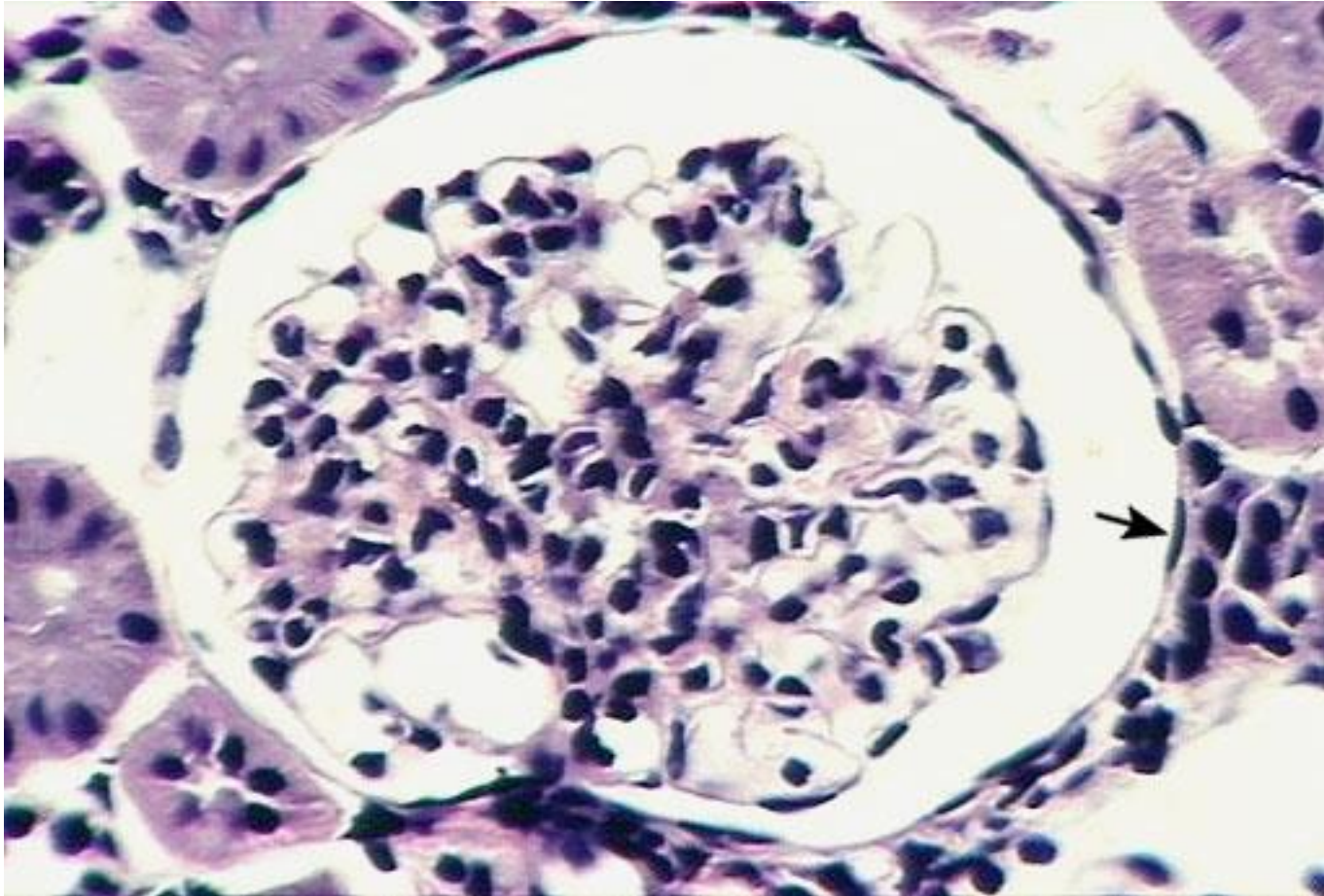
#1



#2

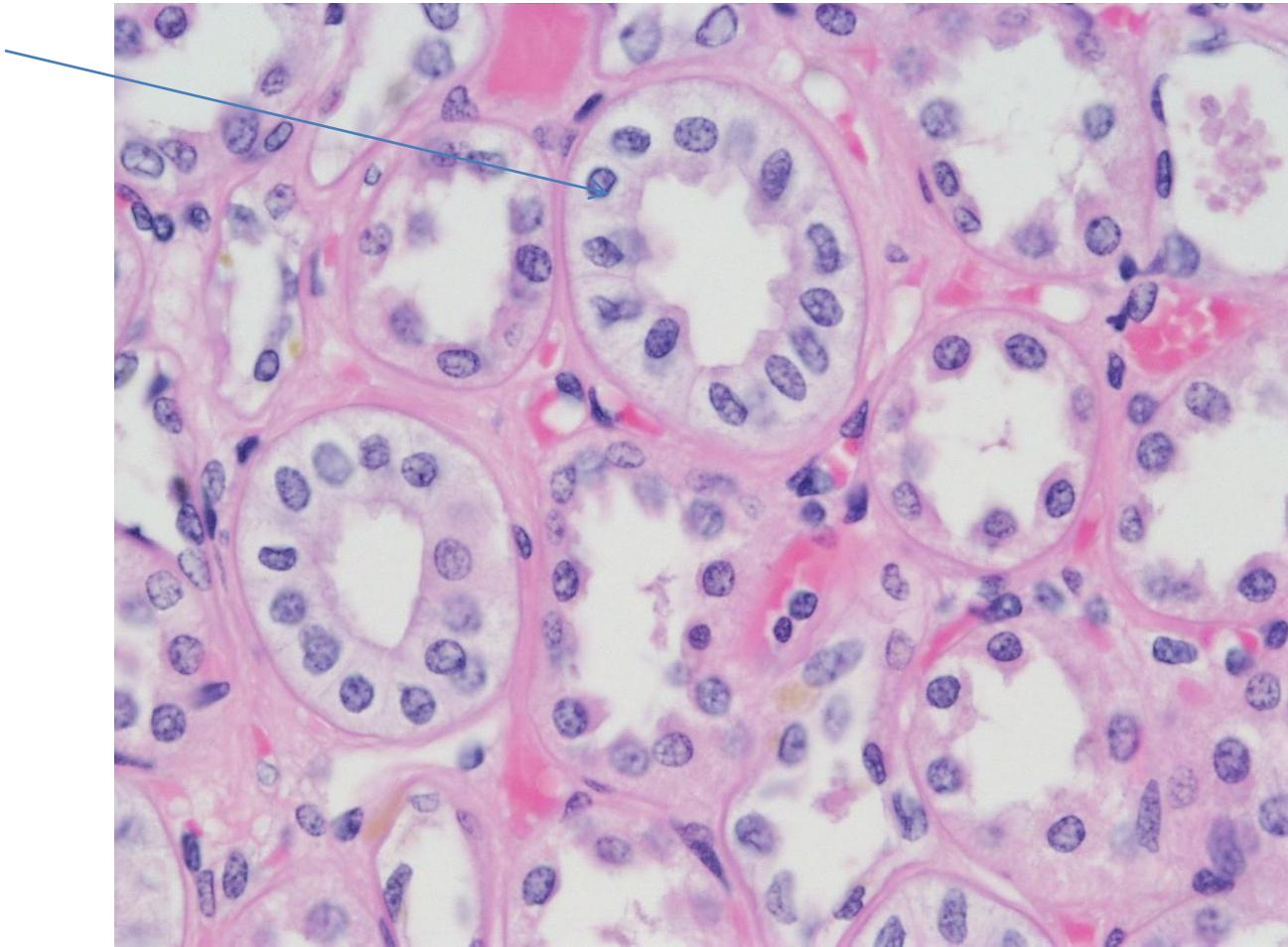


#3





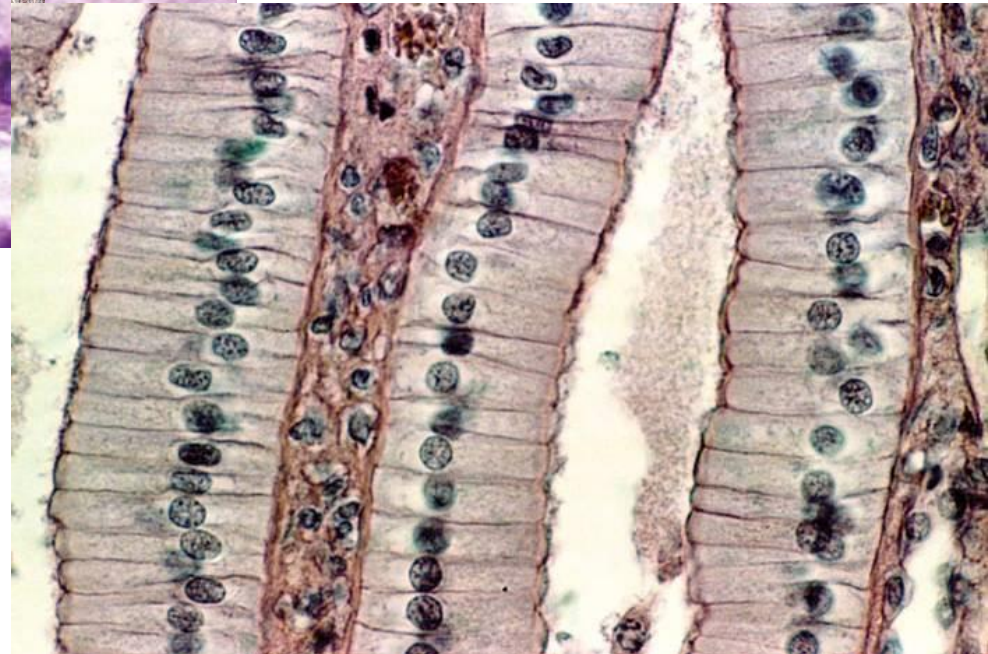
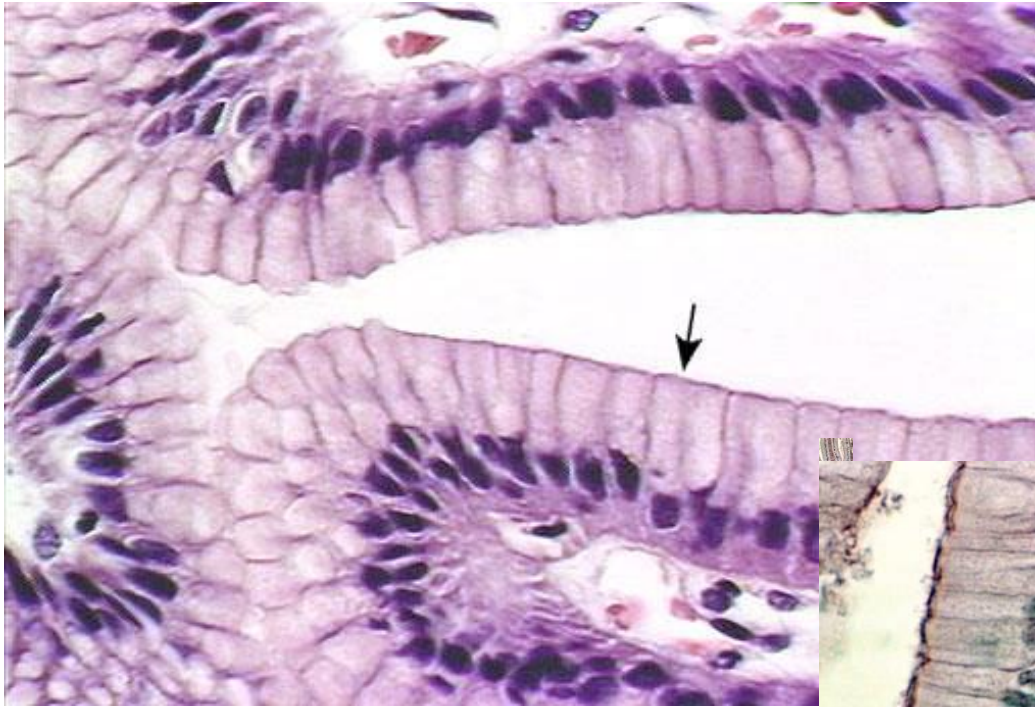
#4



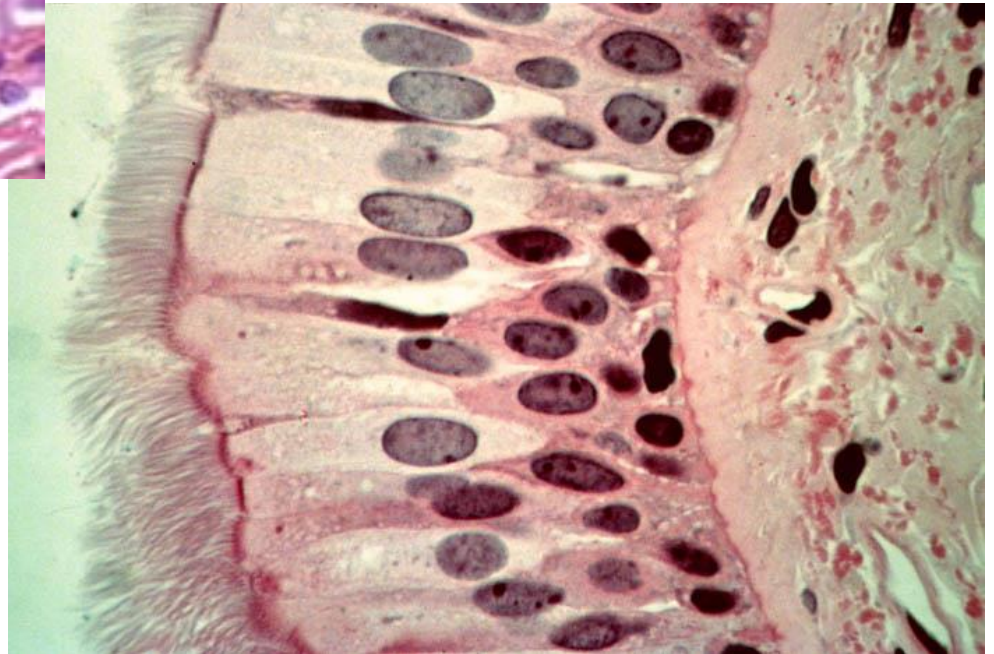
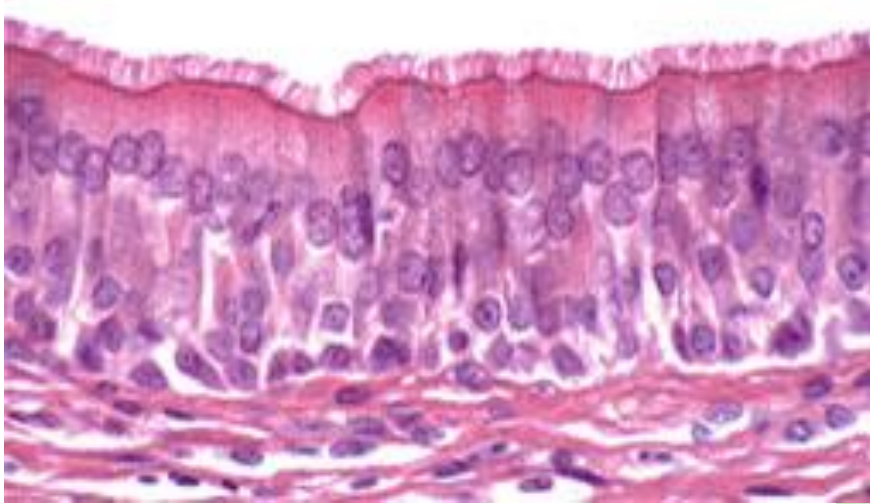
#5



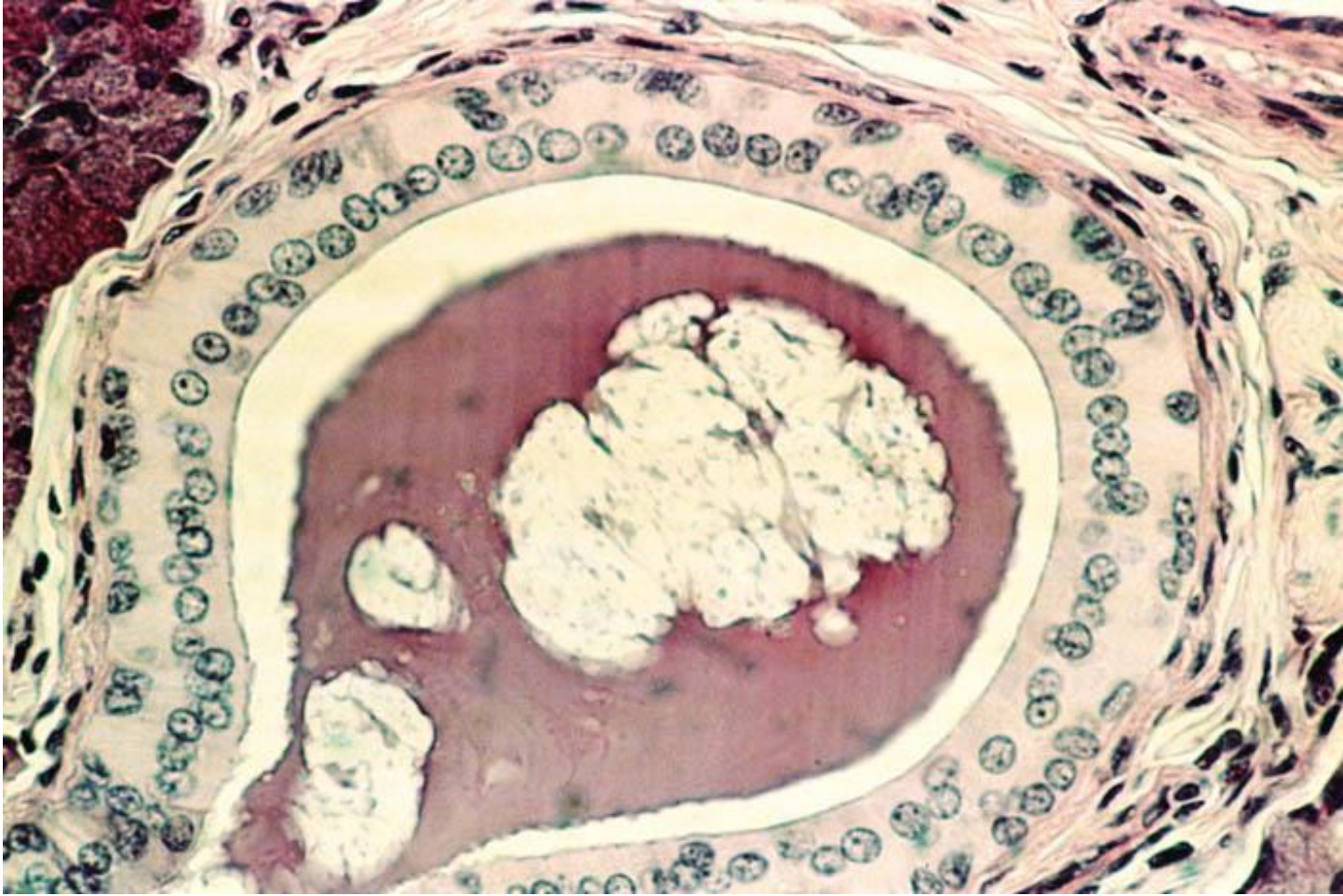
#6



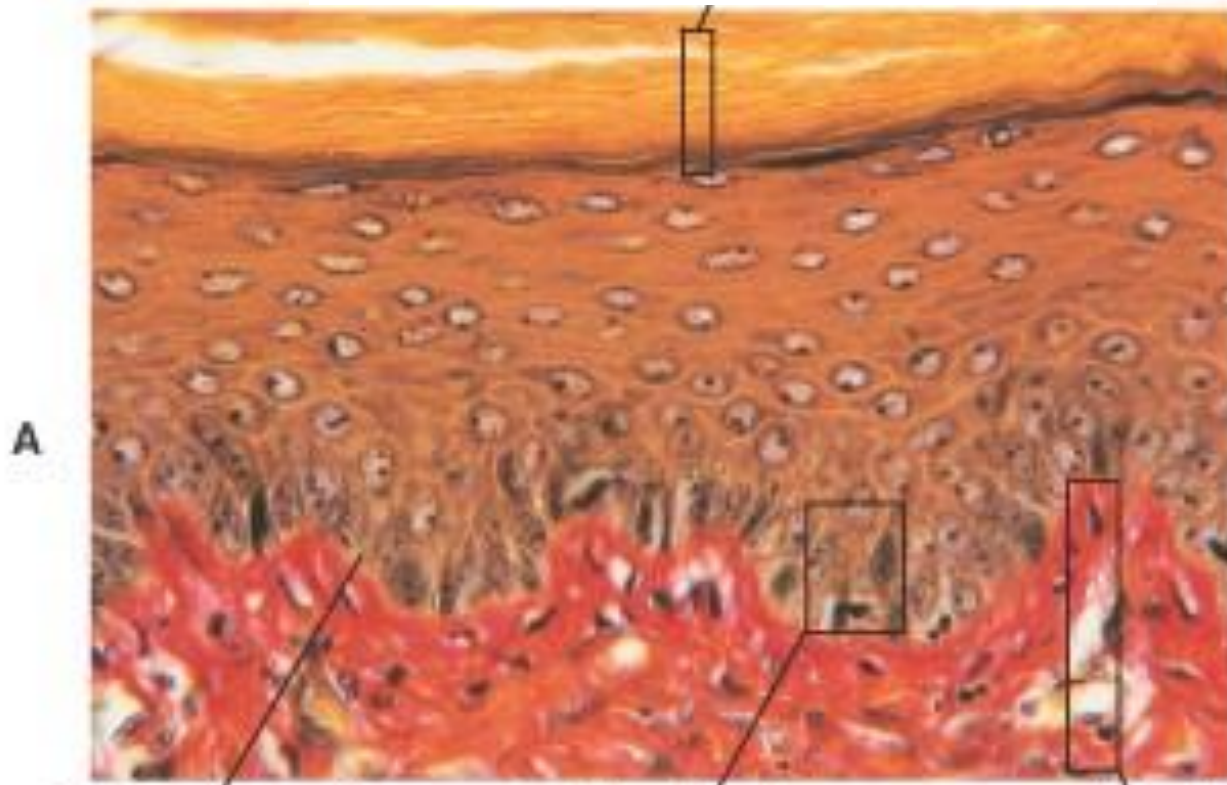
#7



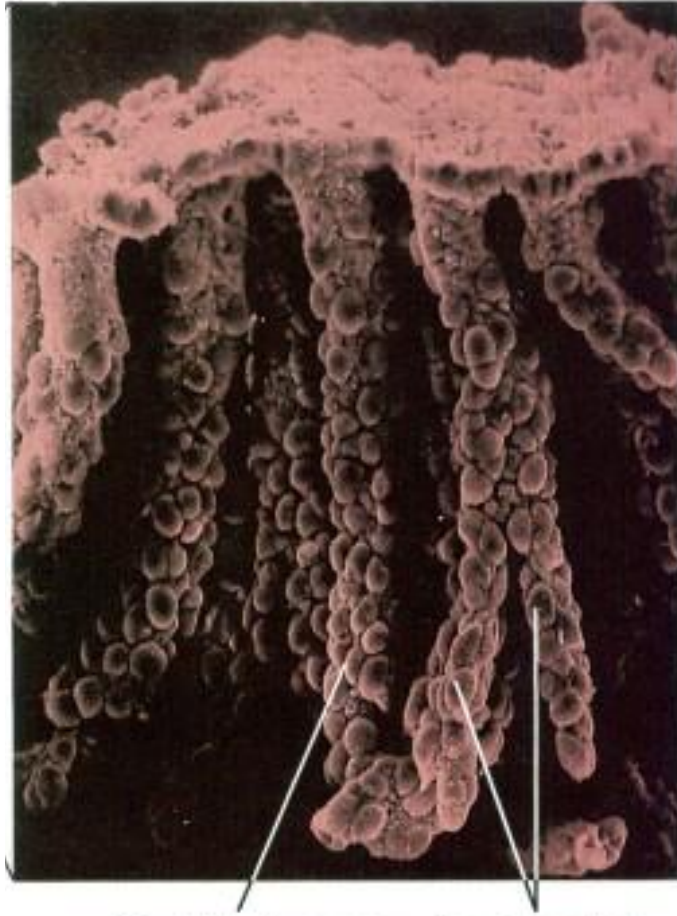
#8



#9



#10



# Answers

- 1 – transitional
- 2 – stratified columnar
- 3 – simple squamous
- 4 – simple cuboidal
- 5 – stratified squamous
- 6 – simple columnar
- 7 – psuedostratified columnar
- 8 – stratified cuboidal
- 9 – stratified squamos keratinized
- 10 – exocrine gland