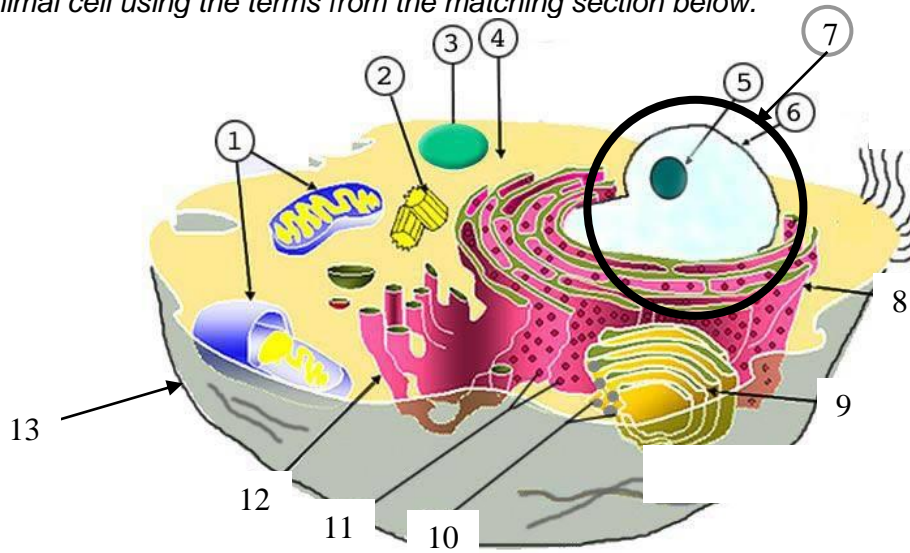


**Animal Cell Labeling**

Label the animal cell using the terms from the matching section below.



**Definition Matching**

Organelle	Definition/Function
A. Cell Membrane	14. Contains nearly all the cell's DNA; beginning of protein synthesis
B. Centrioles	15. Making and release of proteins into the cell
C. Nucleus	16. Helps with cell division in animal cells
D. Nucleolus	17. Protects and regulates what enters and leave the nucleus
E. Nuclear Membrane/Envelope	18. Hold all material inside the cell
F. Mitochondria	19. Regulates what enters and leaves the cell
G. Vacuole	20. Converts chemical energy into food for the cell
H. Ribosome	21. Modify, sort, and package proteins and other materials for storage or export
I. Rough Endoplasmic Reticulum	22. Breakdown of lipids, proteins, and carbohydrates; breakdown of old organelles
J. Smooth Endoplasmic Reticulum	23. Region in the nucleus in which protein synthesis begins
K. Cytoplasm	24. Synthesis of membrane lipids; detoxification of drugs
L. Golgi Body/Apparatus	25. Stores water, salts, proteins, and carbohydrates
M. Lysosome	26. Assembly of proteins

