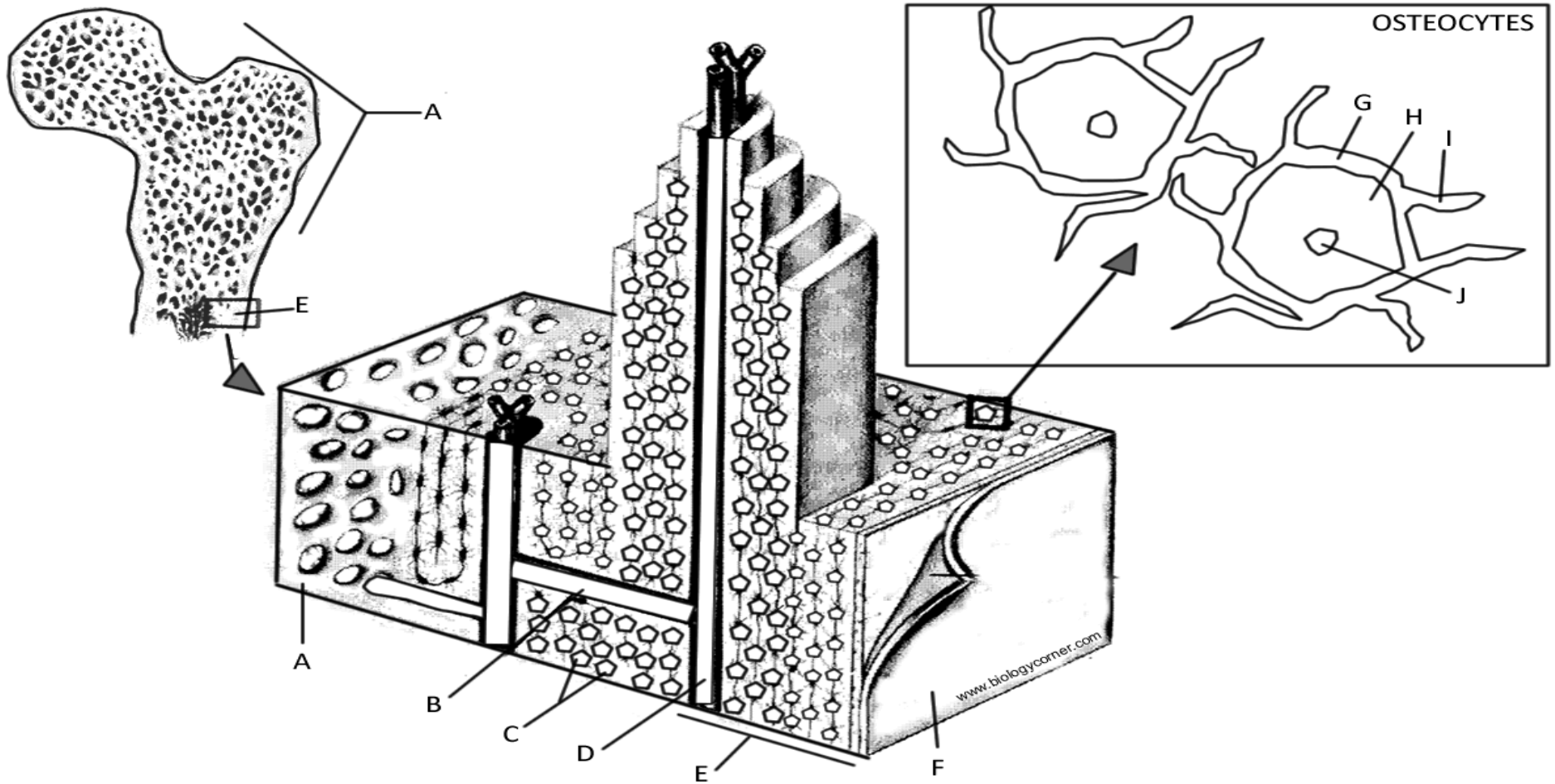


BONE MATRIX COLORING .



BONE COLORING KEY

Spongy Bone (A) - green
 Volkman's Canal (B) - orange
 Osteocytes (C) - red
 Haversian Canal (D) -- yellow
 Compact Bone (E) -- Leave white
 Periosteum (F) - pink

OSTEOCYTES
 Lacuna (G) - blue
 Osteocyte (H) - red
 Canaliculi (I) - purple
 Nucleus of Osteocyte (J) - gray

