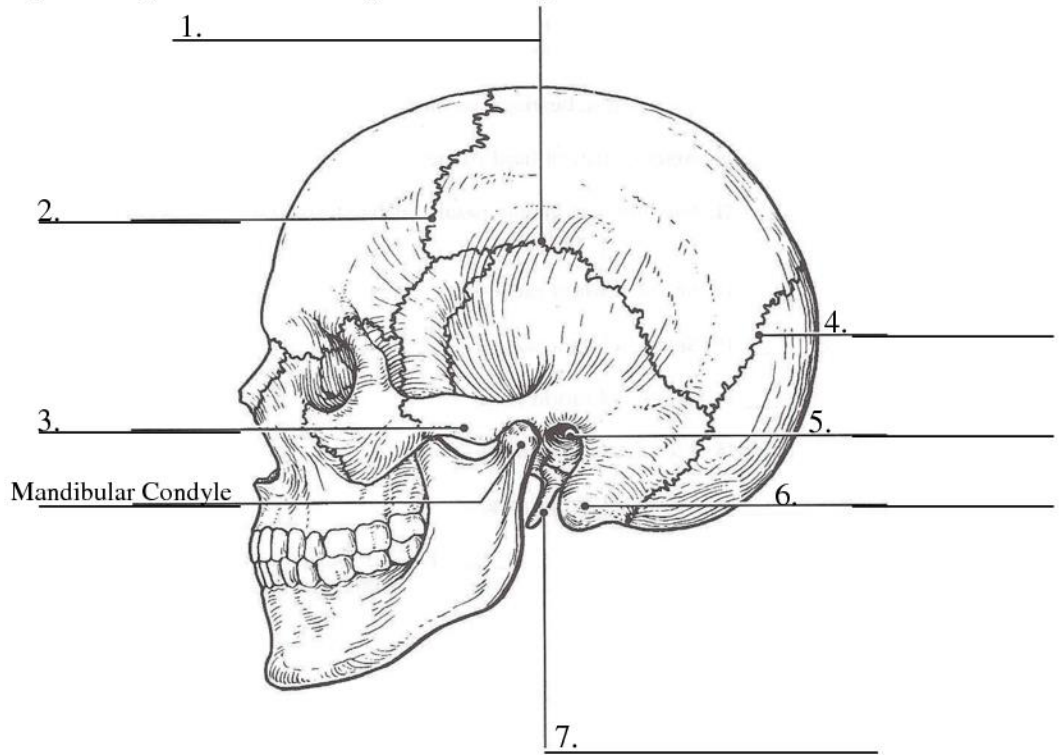


**The Axial Skeleton**

Figure 5-3 shows the lateral view of the skull.

Select different colors for the bones listed below and color the coding circles and corresponding bones in the figure. Complete the figure by labeling the bone markings indicated by leader lines.

- Frontal
- Parietal
- Mandible
- Maxilla
- Sphenoid
- Ethmoid
- Temporal
- Zygomatic
- Occipital
- Nasal
- Lacrimal

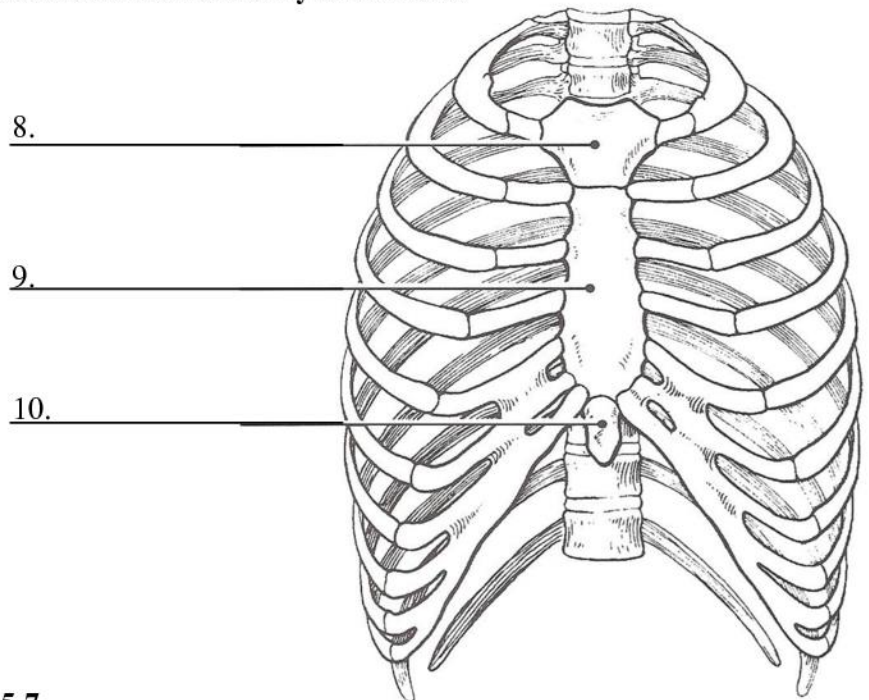


**Figure 5-3**

Figure 5-7 is an anterior view of the bony thorax.

Select different colors to identify the structures below and color the coding circles and corresponding structures. Then label the subdivisions of the sternum indicated by leader lines.

- All true ribs
- Costal cartilages
- All false ribs
- Sternum



**Figure 5-7**